

temenos.com

TLC Online Learning Packs

July 2025



temenos

Everyone's Banking Platform

TLC Online

Learning Pack Content & Costs

When you become a TLC Online member you will have access to the TLC Online platform where you can manage your digital profile and interact with our other members. But most importantly it provides you with the opportunity to purchase one or more of our learning packs, listed below, providing one year of unlimited, 24x7 access to upskill, train, test and certify yourself in the specialist areas that matter to you and your organisation. This document outlines what each pack contains.

This document describes new certification focused Learning Pathways. Please see Pathways Brochure for details.



Premium Pack

Courses: 600+

Annual Cost: \$2,420 USD



Induction

Courses: 10

Cost: Free



Transact Core Banking

Courses: 470

Annual Cost: \$1,705 USD



Temenos Digital

Courses: 96

Annual Cost: \$1,705 USD



Wealth Management

Courses: 162

Annual Cost: \$1,705 USD



Payments

Courses: 79

Annual Cost: \$990 USD



Analytics

Courses: 50

Annual Cost: \$990 USD



Financial Crime Mitigation

Courses: 39

Annual Cost: \$990 USD



Transact Migration

Courses: 97

Annual Cost: \$990 USD



Transact Upgrade

Courses: 32

Annual Cost: \$990 USD



Project Manager

Courses: 36

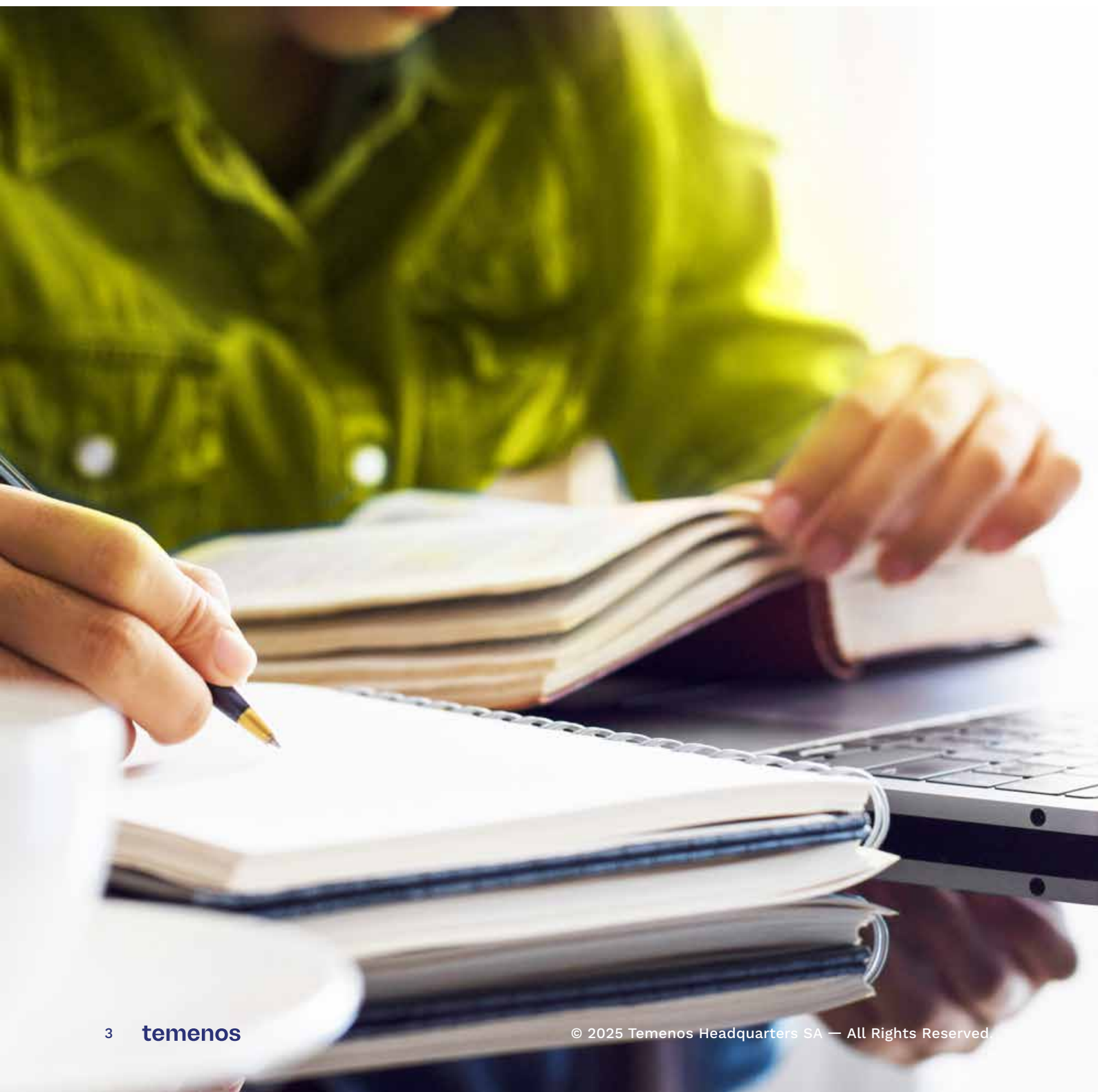
Annual Cost: \$990 USD

Next Steps

New to TLC Online?

To access and pay for any of our Learning packs, please ask to [become a member here](#) and our team will contact you with instructions. You may also speak to your company's training representative to organise payment via invoice. Once you have activated your membership, you may [log into the TLC Online platform here](#).

For more information please contact: tlcsupport@temenos.com



Certifications by Learning Pack



Premium Pack

| Individual Certifications | | | Code | Credits | Individual Certifications | | | Code | Credits |
|---------------------------|--|--|-----------|---------|---------------------------|---|--|-----------|---------|
| 1 | AA Safe Deposit Box | | T3TAABX | 20 | 18 | Channels - ARC Internet Banking | | T3ARCIB | 40 |
| 2 | Administration | | T3TAD | 40 | 19 | Channels - ARC Mobile Banking | | T3ARCMB | 40 |
| 3 | API Monitoring | | TC-T3APIM | 20 | 20 | Channels Digital Engagement | | T3DE | 40 |
| 4 | Arrangement Architecture Accounts | | T3TAAR | 40 | 21 | Channels PM Advisory | | CH1PMADV | 20 |
| 5 | Arrangement Architecture Agency Commission | | T3TAAAG | 20 | 22 | Channels PM B2F | | CH1PMB2F | 20 |
| 6 | Arrangement Architecture Core | | T3AAC | 40 | 23 | Channels PM F2B | | CH1PMF2B | 20 |
| 7 | Arrangement Architecture Core - Technical | | T3AACT | 20 | 24 | Cheque and Draft Issue Management | | T3TCI | 20 |
| 8 | Arrangement Architecture Deposits | | T3TAAD | 40 | 25 | Close Of Business Management | | TC-T3TCM | 40 |
| 9 | Arrangement Architecture Loans | | T3TAAL | 40 | 26 | Cloud Foundation | | TC-T3CFND | 20 |
| 10 | Arrangement Architecture Rewards | | T3RW | 20 | 27 | Collateral | | T3TCO | 40 |
| 11 | Automation Basics | | FSTAB | 40 | 28 | Collection | | T3TCL | 20 |
| 12 | Balance Netting | | T3TBN | 40 | 29 | Common Reporting Standard | | T3CRS | 20 |
| 13 | Best Practices for ADF Framework | | FSTADF | 20 | 30 | Connectors | | T3TC | 40 |
| 14 | Best Practices for BI Publisher | | FSTBIP | 20 | 31 | Core - Customer Relationship Management | | T3CRM | 40 |
| 15 | Business Analytics | | T3TAB | 20 | 32 | Core - Induction Business | | T1ESL-2-B | 20 |
| 16 | Business Events Management | | T3TBE | 20 | 33 | Core - Induction Technical | | T1ESL-1-T | 20 |
| 17 | Cash Pooling (Liquidity Management) | | T3TPO | 20 | 34 | Core Accounts | | T3TAC | 40 |
| | | | | | 35 | Core COB Management | | TC-T3TCM | 40 |



Premium Pack

| Individual Certifications | | Code | Credits |
|---------------------------|---|------------|---------|
| 36 | Corporate Lending | T3TAACL | 40 |
| 37 | Customer Data Protection and Consent Management | T3TCDP | 20 |
| 38 | Customisation | T3CUS | 80 |
| 39 | Data Inbound Outbound Integrity and Access GA | FSTDATGA | 20 |
| 40 | Data Inbound Outbound Integrity and Access GI | FSTDATGI | 20 |
| 41 | Data Migration | T3DMG | 80 |
| 42 | Derivatives | T3TDX | 40 |
| 43 | Design Studio for Core Change Management | T3DST24 | 20 |
| 44 | Direct Debits | T3TDD | 20 |
| 45 | DW EXPORT | T3DWE | 40 |
| 46 | Enhanced Accounting System | FSTAS | 40 |
| 47 | Event Framework - Inflow | T3FL | 20 |
| 48 | Extensibility for Java | T3TECJ | 20 |
| 49 | Extensibility Framework | TC-T3EF | 20 |
| 50 | External BPM | T3BPM | 20 |
| 51 | Externalized Cache REDIS | TC-T3REDIS | 20 |
| 52 | Factoring and Forfaiting (Bills) | T3TBL | 20 |
| 53 | FATCA | T3TFA | 20 |
| 54 | Fiduciary | T3TFD | 20 |
| 55 | Financial Accounting | T3TFI | 80 |
| 56 | Financial Crime Mitigation Business | T3FCM | 40 |

| Individual Certifications | | Code | Credits |
|---------------------------|---|----------|---------|
| 57 | Financial Inclusion Business | T3FIBU | 20 |
| 58 | Financial Inclusion Utilities | T3FIUT | 20 |
| 59 | Financial Reporting | T3TRE | 40 |
| 60 | Forex | T3TFX | 40 |
| 61 | Forward Rate Agreements | T3TFR | 20 |
| 62 | FRM PDLGD Functional | FRMPLF | 20 |
| 63 | FRM PDLGD Technical | FRMPLT | 20 |
| 64 | Front Office Asset Management | T3TAM | 40 |
| 65 | Front Office Delivery | T3DEL | 40 |
| 66 | Front Office Document Management | T3DM | 20 |
| 67 | Front Office PM Advanced Performance Analysis Attribution | FO2PMPAA | 20 |
| 68 | Front Office PM Advanced Performance Analysis Standard | FO2PMPAS | 20 |
| 69 | Front Office PM Constraints Management | FO2PMACM | 20 |
| 70 | Front Office PM Data Administration and Securities | FO2PMDAS | 20 |
| 71 | Front Office PM Operations and Positions | FO2PMOPP | 20 |
| 72 | Front Office PM Order Management | FO2PMOMT | 20 |
| 73 | Front Office PM Portfolio Strategies | FO2PMPFS | 20 |
| 74 | Front Office Scripts and Formats | FO2PMSCF | 20 |
| 75 | Front Office Securities Administration and Trading - Advanced | T3TSCTA | 40 |
| 76 | Front Office Securities Administration and Trading - Basic | T3TSCTB | 40 |



Premium Pack

| Individual Certifications | | Code | Credits |
|---------------------------|--|-----------|---------|
| 77 | Funds Transfer | T3TFT | 40 |
| 78 | Global Accounting Advanced Core 1 | FSFGAAC1 | 20 |
| 79 | Global Accounting Advanced Core 2 | FSFGAAC2 | 20 |
| 80 | Global Accounting Basics | FSFGAB | 40 |
| 81 | Global Accounting Data Mart and Investment Book Of Records (IBOR) Foundation | FSFGADM | 20 |
| 82 | Global Accounting Workflow and Exception Monitor (WEM) | FSFGAWEM | 20 |
| 83 | Global Investor Anti Dilution Levy (ADL) | FSFGIADL | 20 |
| 84 | Global Investor Anti-Money Laundering (AML) | FSFAML | 20 |
| 85 | Global Investor Contingent Deferred Sales Charge (CDSC) | FSFGICDSC | 20 |
| 86 | Global Investor Data Mart | FSFGIDM | 20 |
| 87 | Global Investor Foreign Account Tax Compliance Act (FATCA) and Common Reporting Standard (CRS) | FSFFATC | 20 |
| 88 | Global Investor General Ledger | FSFGIGL | 20 |
| 89 | Global Investor Receipts | FSFGIRCPT | 20 |
| 90 | Global Investor Taxes | FSFGITAX | 20 |
| 91 | Identity and Access Management - Single Sign On | FSTISSO | 20 |
| 92 | Identity and Access Management - User Access Management | FSTIUAM | 20 |
| 93 | IFRS (International Financial Reporting zStandards) | T3TIA | 20 |
| 94 | Inclusive Banking Suite Business | T3IBSBU | 60 |
| 95 | Inclusive Banking Suite Utilities | T3IBSUT | 20 |

| Individual Certifications | | Code | Credits |
|---------------------------|---|-----------|---------|
| 96 | Infinity Branch Banking | T3INBB | 20 |
| 97 | Infinity Essentials Functional | T3INESF | 20 |
| 98 | Infinity Essentials Technical | T3INEST | 20 |
| 99 | Infinity Retail Banking Functional | T3INRBF | 20 |
| 100 | Insight Risk (ALM) | T3TIRALM | 20 |
| 101 | Insight Risk (Market Risk) | T3TIRMRR | 20 |
| 102 | Insight Risk (Regulatory Capital) | T3TIRRC | 40 |
| 103 | Interaction Data Services | T3DSD | 20 |
| 104 | Interest Taxes and Charges | T3TIC | 40 |
| 105 | Internet Banking Retail | T3IBR | 40 |
| 106 | Internet Banking Retail Functional | T3IBRF | 20 |
| 107 | IRFX | T3IRFX | 20 |
| 108 | Islamic deposits and profit distribution system | T3TIDA | 40 |
| 109 | Islamic financing & Islamic Treasury | T3TIFT | 40 |
| 110 | jBASE | T3JB | 40 |
| 111 | Kubernetes - On premise | TC-T3KP | 40 |
| 112 | LD Based | T3ISLDT24 | 40 |
| 113 | Letters of Credit (Trade Finance) | T3TLC | 80 |
| 114 | Limits | T3TLI | 40 |
| 115 | Loans and Deposits | T3TLD | 40 |
| 116 | Market Risk Functional | FRMMRF | 20 |



Premium Pack

| Individual Certifications | | Code | Credits |
|---------------------------|--|-----------|---------|
| 117 | Market Risk Technical | FRMMRT | 20 |
| 118 | MF API Performance | TC-T3MFAP | 20 |
| 119 | MF Event Performance | TC-T3MFEP | 20 |
| 120 | MFGA Migration Module | FSFGAMIG | 20 |
| 121 | Migration Tool | FSTMIG | 20 |
| 122 | Miscellaneous Deals | T3TMD | 40 |
| 123 | Money Market | T3TMM | 40 |
| 124 | Multi Company - Multi-Book | T3TMC | 20 |
| 125 | Multi Currency Accounts | T3TMCYAAR | 20 |
| 126 | Multifonds Technical Support Process | FSTISP | 20 |
| 127 | Multi-Tenancy | T3MT | 20 |
| 128 | Open Financial Service | T3OFS | 40 |
| 129 | Past Dues | T3TPD | 40 |
| 130 | Payment Order Preliminary | T3TPI | 40 |
| 131 | Performance Engineering | FSTPERF | 20 |
| 132 | Performance Engineering Basics | TC-T3PEB | 20 |
| 133 | Performance Engineering Tools | T3PET | 40 |
| 134 | Performance Engineering Tools | TC-T3PET | 40 |
| 135 | PLSQL Forms and Reports Best Practices | FSTPLS | 20 |
| 136 | Position Management | T3TPM | 20 |
| 137 | Process Workflow | T3PW | 40 |

| Individual Certifications | | Code | Credits |
|---------------------------|--|------------|---------|
| 138 | Product Global Investor Basic | FSFGIB | 20 |
| 139 | Programming | T3PRG | 80 |
| 140 | Relational Replication | T3RR | 40 |
| 141 | Repos | T3TRP | 40 |
| 142 | Retail Sweeping | T3TRS | 20 |
| 143 | Securities Back Office - Advanced | T3TSCBA | 40 |
| 144 | Securities Back Office - Basic | T3TSCBB | 40 |
| 145 | Securities Back Office - Corporate Actions | T3TSCCA | 40 |
| 146 | Security Framework XACML & IAM | TC-T3TSFXI | 20 |
| 147 | Security Management System | T3SMS | 40 |
| 148 | SolutionPractitioner - Network | TC-T3SPN | 20 |
| 149 | SolutionPractitioner - Storage | TC-T3SPS | 20 |
| 150 | SQL Technical | FSTSQT | 20 |
| 151 | Structured Products | T3TSY | 40 |
| 152 | Swaps | T3TSW | 20 |
| 153 | Syndicated Loans | T3TSL | 40 |
| 154 | TAFJ | T3TAFJ | 40 |
| 155 | TAFJ Integration Framework | T3TIF | 20 |
| 156 | TDH Implementation (Non-SaaS) | T3TDE | 40 |
| 157 | TDS Advanced | T3TTDSA | 40 |
| 158 | TDS Foundation | T3TTDS | 40 |



Premium Pack

| Individual Certifications | | Code | Credits | Individual Certifications | | Code | Credits |
|---------------------------|--|-----------|---------|---------------------------|--|-----------|---------|
| 159 | Teller | T3TTT | 40 | 168 | Transact Data Hub (Non-SaaS) Overview | TC-T3TDLO | 20 |
| 160 | Temenos Analytics Technical (Non-SaaS) | T3TAT | 40 | 169 | Transact Data Hub (Non-SaaS) Overview | TC-T3TDLO | 20 |
| 161 | Temenos Implementation Methodology | T3TIM | 40 | 170 | Universal Performance Metrics | T3UPM | 20 |
| 162 | Temenos Open Connectivity Framework (TAFC) | T3TOCF(E) | 20 | 171 | Upgrade | T3UPG | 40 |
| 163 | Temenos Payments Basics | T3TPB | 40 | 172 | UUX and Web Component Developer | TC-T3UUX | 40 |
| 164 | Temenos Payments Hub - Standalone System | T3STAL | 20 | 173 | UXP Temenos UXP | T3UXP | 40 |
| 165 | Temenos Transact Packaging with Temenos Packager | T3TTP | 20 | 174 | WealthSuite Overview | FO1WSOVE | 20 |
| 166 | tOP Enterprise Monitoring | T3tOP | 20 | 175 | Web Services | T3TWS | 20 |
| 167 | TPH TARGET2 MX | T3TTMX | 20 | 176 | WEM Technical | FSTWEM | 20 |
| | | | | 177 | Workflow and Exception Monitor (WEM) Pricing | FSFGIWEM | 20 |



Induction

| Individual Certifications | | Code | Credits | Individual Certifications | | Code | Credits |
|---------------------------|---------------------------|-----------|---------|---------------------------|----------------------------|-----------|---------|
| 1 | Core - Induction Business | T1ESL-2-B | 20 | 2 | Core - Induction Technical | T1ESL-1-T | 20 |



Transact Core Banking

| Individual Certifications | | Code | Credits | Individual Certifications | | Code | Credits |
|---------------------------|--|---------|---------|---------------------------|---|--------|---------|
| 1 | Administration | T3TAD | 40 | 4 | Arrangement Architecture Core | T3AAC | 40 |
| 2 | Arrangement Architecture Accounts | T3TAAR | 40 | 5 | Arrangement Architecture Core - Technical | T3AACT | 20 |
| 3 | Arrangement Architecture Agency Commission | T3TAAAG | 20 | 6 | Arrangement Architecture Deposits | T3TAAD | 40 |



Transact Core Banking

| Individual Certifications | | Code | Credits | Individual Certifications | | Code | Credits |
|---------------------------|---|-----------|---------|---------------------------|---|---------|---------|
| 7 | Arrangement Architecture Loans | T3TAAL | 40 | 29 | Design Studio for Core Change Management | T3DST24 | 20 |
| 8 | Arrangement Architecture Rewards | T3RW | 20 | 30 | Direct Debits | T3TDD | 20 |
| 9 | Balance Netting | T3TBN | 40 | 31 | DW EXPORT | T3DWE | |
| 10 | Business Events Management | T3TBE | 20 | 32 | Event Framework - Inflow | T3FL | 20 |
| 11 | Cash Pooling (Liquidity Management) | T3TPO | 20 | 33 | Extensibility for Java | T3TECJ | 20 |
| 12 | Channels - ARC Internet Banking | T3ARCIB | 40 | 34 | External BPM | T3BPM | 20 |
| 13 | Channels - ARC Mobile Banking | T3ARCMB | 40 | 35 | Factoring and Forfaiting (Bills) | T3TBL | 20 |
| 14 | Cheque and Draft Issue Management | T3TCI | 20 | 36 | Fiduciary | T3TFD | 20 |
| 15 | Close Of Business Management | TC-T3TCM | 40 | 37 | Financial Accounting | T3TFI | 80 |
| 16 | Collateral | T3TCO | 40 | 38 | Financial Inclusion Business | T3FIBU | 20 |
| 17 | Collection | T3TCL | 20 | 39 | Financial Inclusion Utilities | T3FIUT | 20 |
| 18 | Common Reporting Standard | T3CRS | 20 | 40 | Financial Reporting | T3TRE | 40 |
| 19 | Connectors | T3TC | 40 | 41 | Forex | T3TFX | 40 |
| 20 | Core - Customer Relationship Management | T3CRM | 40 | 42 | Forward Rate Agreements | T3TFR | 20 |
| 21 | Core - Induction Business | T1ESL-2-B | 20 | 43 | Front Office Asset Management | T3TAM | 40 |
| 22 | Core - Induction Technical | T1ESL-1-T | 20 | 44 | Front Office Delivery | T3DEL | 40 |
| 23 | Core Accounts | T3TAC | 40 | 45 | Front Office Document Management | T3DM | 20 |
| 24 | Corporate Lending | T3TAACL | 40 | 46 | Front Office Securities Administration and Trading - Advanced | T3TSCTA | 40 |
| 25 | Customer Data Protection and Consent Management | T3TCDP | 20 | 47 | Front Office Securities Administration and Trading - Basic | T3TSCTB | 40 |
| 26 | Customisation | T3CUS | 80 | 48 | Funds Transfer | T3TFT | 40 |
| 27 | Data Migration | T3DMG | 80 | 49 | Inclusive Banking Suite Business | T3IBSBU | 60 |
| 28 | Derivatives | T3TDX | 40 | | | | |



Transact Core Banking

| Individual Certifications | | Code | Credits | Individual Certifications | | Code | Credits |
|---------------------------|---|-----------|---------|---------------------------|--|------------|---------|
| 50 | Inclusive Banking Suite Utilities | T3IBSUT | 20 | 72 | Programming | T3PRG | 80 |
| 51 | Interaction Data Services | T3DSD | 20 | 73 | Relational Replication | T3RR | 40 |
| 52 | Interest Taxes and Charges | T3TIC | 40 | 74 | Repos | T3TRP | 40 |
| 53 | IRFX | T3IRFX | 20 | 75 | Retail Sweeping | T3TRS | 20 |
| 54 | Islamic deposits and profit distribution system | T3TIDA | 40 | 76 | Securities Back Office - Advanced | T3TSCBA | 40 |
| 55 | Islamic financing & Islamic Treasury | T3TIFT | 40 | 77 | Securities Back Office - Basic | T3TSCBB | 40 |
| 56 | jBASE | T3JB | 40 | 78 | Securities Back Office - Corporate Actions | T3TSCCA | 40 |
| 57 | LD Based | T3ISLDT24 | 40 | 79 | Security Management System | T3SMS | 40 |
| 58 | Letters of Credit (Trade Finance) | T3TLC | 80 | 80 | Structured Products | T3TSY | 40 |
| 59 | Limits | T3TLI | 40 | 81 | Swaps | T3TSW | 20 |
| 60 | Loans and Deposits | T3TLD | 40 | 82 | Syndicated Loans | T3TSL | 40 |
| 61 | Miscellaneous Deals | T3TMD | 40 | 83 | TAFJ | T3TAFJ | 40 |
| 62 | Money Market | T3TMM | 40 | 84 | TAFJ Integration Framework | T3TIF | 20 |
| 63 | Multi Company - Multi-Book | T3TMC | 20 | 85 | Teller | T3TTT | 40 |
| 64 | Multi Currency Accounts | T3TMCYAAR | 20 | 86 | Temenos Implementation Methodology | T3TIM | 40 |
| 65 | Multi-Tenancy | T3MT | 20 | 87 | Temenos Open Connectivity Framework (TAFJ) | T3TOCF(EF) | 20 |
| 66 | Open Financial Service | T3OFS | 40 | 88 | Temenos Payments Basics | T3TPB | 40 |
| 67 | Past Dues | T3TPD | 40 | 89 | Temenos Payments Hub - Standalone System | T3STAL | 20 |
| 68 | Payment Order Preliminary | T3TPI | 40 | 90 | Temenos Transact Packaging with Temenos Packager | T3TTP | 20 |
| 69 | Performance Engineering Tools | T3PET | 40 | 91 | tOP Enterprise Monitoring | T3tOP | 20 |
| 70 | Position Management | T3TPM | 20 | 92 | TPH TARGET2 MX | T3TTMX | 20 |
| 71 | Process Workflow | T3PW | 40 | 93 | Universal Performance Metrics | T3UPM | 20 |



Transact Core Banking

| Individual Certifications | | Code | Credits | Individual Certifications | | Code | Credits |
|---------------------------|-----------------|-------|---------|---------------------------|--------------|-------|---------|
| 94 | Upgrade | T3UPG | 40 | 96 | Web Services | T3TWS | 20 |
| 95 | UXP Temenos UXP | T3UXP | 40 | | | | |



Temenos Digital

| Individual Certifications | | Code | Credits | Individual Certifications | | Code | Credits |
|---------------------------|--------------------------------|---------|---------|---------------------------|------------------------------------|---------|---------|
| 1 | Infinity Branch Banking | T3INBB | 20 | 4 | Infinity Retail Banking Functional | T3INRBF | 20 |
| 2 | Infinity Essentials Functional | T3INESF | 20 | 5 | UXP Temenos UXP | T3UXP | 40 |
| 3 | Infinity Essentials Technical | T3INEST | 20 | 6 | Temenos Implementation Methodology | T3TIM | 40 |



Wealth Management

| Individual Certifications | | Code | Credits | Individual Certifications | | Code | Credits |
|---------------------------|--|---------|---------|---------------------------|---|----------|---------|
| 1 | Collateral | T3TCO | 40 | 10 | Channels Digital Engagement | T3DE | 40 |
| 2 | Core - Customer Relationship Management | T3CRM | 40 | 11 | Channels PM Advisory | CH1PMADV | 20 |
| 3 | Core Accounts | T3TAC | 40 | 12 | Channels PM B2F | CH1PMB2F | 20 |
| 4 | Design Studio for Core Change Management | T3DST24 | 20 | 13 | Channels PM F2B | CH1PMF2B | 20 |
| 5 | Financial Accounting | T3TFI | 80 | 14 | Front Office PM Advanced Performance Analysis Attribution | FO2PMPAA | 20 |
| 6 | Limits | T3TLI | 40 | 15 | Front Office PM Advanced Performance Analysis Standard | FO2PMPAS | 20 |
| 7 | Securities Back Office - Advanced | T3TSCBA | 40 | 16 | Front Office PM Constraints Management | FO2PMACM | 20 |
| 8 | Securities Back Office - Basic | T3TSCBB | 40 | 17 | Front Office PM Data Administration and Securities | FO2PMDAS | 20 |
| 9 | Securities Back Office - Corporate Actions | T3TSCCA | 40 | | | | |



Wealth Management

| Individual Certifications | | Code | Credits | Individual Certifications | | Code | Credits |
|---------------------------|--|----------|---------|---------------------------|------------------------------------|----------|---------|
| 18 | Front Office PM Operations and Positions | FO2PMOPP | 20 | 24 | Internet Banking Retail Functional | T3IBRF | 20 |
| 19 | Front Office PM Order Management | FO2PMOMT | 20 | 25 | WealthSuite Overview | FO1WSOVE | 20 |
| 20 | Front Office PM Portfolio Strategies | FO2PMPFS | 20 | 26 | Temenos Implementation Methodology | T3TIM | 40 |
| 21 | Front Office Securities Administration and Trading – Basic | T3TSCTB | 40 | 27 | Repos | T3TRP | 40 |
| 22 | Front Office Scripts and Formats | FO2PMSCF | 20 | 28 | TDS Advanced | T3TTDSA | 40 |
| 23 | Internet Banking Retail | T3IBR | 40 | 29 | TDS Foundation | T3TTDS | 40 |
| | | | | 30 | IRFX | T3IRFX | 20 |



Payments

| Individual Certifications | | Code | Credits | Individual Certifications | | Code | Credits |
|---------------------------|-----------------------------------|-------|---------|---------------------------|--|--------|---------|
| 1 | Cheque and Draft Issue Management | T3TCI | 20 | 6 | Temenos Payments Basics | T3TPB | 40 |
| 2 | Direct Debits | T3TDD | 20 | 7 | Temenos Payments Hub - Standalone System | T3STAL | 20 |
| 3 | Funds Transfer | T3TFT | 40 | 8 | Temenos Implementation Methodology | T3TIM | 40 |
| 4 | Payment Order Preliminary | T3TPI | 40 | 9 | TPH TARGET2 MX | T3TTMX | 20 |
| 5 | Teller | T3TTT | 40 | | | | |



Analytics

| Individual Certifications | | Code | Credits | Individual Certifications | | Code | Credits |
|---------------------------|--|-------|---------|---------------------------|---------------------------------------|-----------|---------|
| 1 | Business Analytics | T3TAB | 20 | 3 | TDH Implementation (Non-SaaS) | T3TDE | 40 |
| 2 | Temenos Analytics Technical (Non-SaaS) | T3TAT | 40 | 4 | Transact Data Hub (Non-SaaS) Overview | TC-T3TDLO | 20 |



Analytics

Individual Certifications

Code

Credits

5

Temenos Implementation
Methodology

T3TIM

40

Individual Certifications

Code

Credits



Financial Crime

Individual Certifications

Code

Credits

1

Financial Crime Mitigation
Business

T3FCM

40

Individual Certifications

Code

Credits

2

Temenos Implementation
Methodology

T3TIM

40



Transact Migration

Individual Certifications

Code

Credits

1

Arrangement Architecture
Core

T3AAC

40

2

Arrangement Architecture

T3AACT

20

3

Close Of Business
Management

TC-T3TCM

40

4

Arrangement Architecture
Accounts

T3TAAR

40

5

Core Arrangement
Architecture Deposits

T3TAAD

40

6

Arrangement Architecture
Loans

T3TAAL

40

7

Core - Technical

T3DMG

80

8

Data Migration

T3MT

20

9

Multi-Tenancy

T3OFS

40

10

Open Financial Service

T3TWS

20

11

Web Services

T3TAD

40

Individual Certifications

Code

Credits

12

Administration

T3CUS

80

13

Customisation

T3TECJ

20

14

Extensibility for Java

T3PRG

40

15

Programming

T3SMS

40

16

Security Management
System

T3TAFJ

40

17

TAFJ

T3TIF

20

18

TAFJ Integration Framework T3TOCF (EE)

20

19

Temenos Open Connectivity
Framework (TAFC)

T3UPG

40

20

Upgrade

T3TIM

40

21

Temenos Implementation
Methodology

T3TIM

40

22

IRFX

T3IRFX

20



Transact Upgrade

| Individual Certifications | | Code | Credits | Individual Certifications | | Code | Credits |
|---------------------------|-----------------------------------|----------|---------|---------------------------|--|-------------|---------|
| 1 | Administration | T3TAD | 40 | 8 | Security Management System | T3SMS | 40 |
| 2 | Arrangement Architecture Deposits | T3TAAD | 40 | 9 | TAFJ | T3TAFJ | 40 |
| 3 | Arrangement Architecture Loans | T3TAAL | 40 | 10 | TAFJ Integration Framework | T3TIF | 20 |
| 4 | Customisation | T3CUS | 80 | 11 | Technology and Architecture – Open Financial Service | T3OFS | 40 |
| 5 | Core COB Management | TC-T3TCM | 40 | 12 | Temenos Open Connectivity Framework (T AFC) | T3TOCF (EE) | 20 |
| 6 | Extensibility for Java | T3TECJ | 20 | 13 | Upgrade | T3UPG | 40 |
| 7 | Programming | T3PRG | 80 | 14 | Temenos Implementation Methodology | T3TIM | 40 |



Project Manager

| Individual Certifications | | Code | Credits | Individual Certifications | | Code | Credits |
|---------------------------|-----------------------------------|-----------|---------|---------------------------|------------------------------------|----------|---------|
| 1 | Arrangement Architecture Deposits | T3TAAD | 40 | 4 | Global Accounting Basics | FSFGAB | 40 |
| 2 | Arrangement Architecture Loans | T3TAAL | 40 | 5 | Infinity Essentials Functional | T3INESF | 20 |
| 3 | Core - Induction Business | T1ESL-2-B | 20 | 6 | Temenos Implementation Methodology | T3TIM | 40 |
| | | | | 7 | WealthSuite Overview | FO1WSOVE | 20 |

TLC Online Premium Pack


Courses Available: 600+



All of our specialist packs offer great value and allow our members to focus on the training that matters to them most.

However, many of our members still prefer to opt for our Premium membership. Premium membership still offers exceptional value, providing access to all of the training tools, materials, courses and exams contained in the packs already listed. It also provides access to other courses as yet unavailable through any of our other learning packs.

If you want the most versatile, unlimited and unrestricted access to Temenos Online training and certification we have to offer, then a TLC Premium Membership could be right for you.

|  Analytics | | | |
|--|-------------|---|-------------|
| Full Course Name | Course Code | Full Course Name | Course Code |
| Analytics Application Groups Data Relationship and Datasets | AN1PRGDD | Analytics Temenos Analytics Architecture Dataflow and Configuration | AN1PRAAD |
| Analytics Application KPI Information Tiles and Dashboard | AN1PRKPD | Analytics Temenos Data Engineering and Navigation - Administrator | AN1PRDEA |
| Analytics Application Navigation | AN1PRAAN | Analytics Temenos Data Engineering and Navigation - Designer | AN1PRDED |
| Analytics Application Pivot Reports | AN1PRAPR | Analytics Temenos Data Engineering and Navigation - Designer Part 1 | AN1PRDED1 |
| Analytics Data Engineering and Navigation - Designer | AN1PRDED | Analytics Temenos Data Engineering and Navigation - Designer Part 2 | AN1PRDED2 |
| Analytics Extract Data Store (EDS) Foundation | AN1PREDS | Analytics Temenos Data Engineering and Navigation - Scheduler | AN1PRDES |
| Analytics Introduction to Data Event Streaming (DES) | AN1PRDAT | Analytics Temenos Data Engineering Architecture in Transact Data Hub | AN1PRTTA |
| Analytics Metadata Management System | AN1PRMMS | Analytics Temenos Data Engineering Architecture in Transact Data Hub, Temenos Data Lake and Analytics | AN1PRTTA |
| Analytics Overview | AN1PROVE | Analytics Transact Data Hub Data Lake Dataflow and Configuration | AN1PRDDD |
| Analytics Product Implementation - Technical | AN3PRPOV | Analytics Transact Data Hub Data Reconciliation | AN1PRDRE |
| Analytics Product Introduction - Business | AN1PRPOV | Analytics Transact Data Hub Essentials | AN1PRDHE |
| Analytics Product Introduction - Technical | AN3PRPOV | Analytics Transact Data Hub Installation on Azure | AN1PRIOA |
| Analytics Quick Reports | AN1PRQCR | | |

| Full Course Name | Course Code |
|---|-------------|
| Analytics Transact Data Hub Installation on Premises | AN1PRIOP |
| Analytics Transact Data Hub Overview | AN1PRDDA |
| Analytics Transact Data Hub Semantic Query Layer Foundation | AN1PRSEM |

| Full Course Name | Course Code |
|--|-------------|
| Analytics Transact Data Hub Semantic Query Layer Implementation | AN3PRSEM |
| Analytics Transact Data Hub Semantic Query Layer Installation | AN3PRDHS |
| Analytics Transact Data Hub Temenos Data Lake and Temenos Analytics Overview | AN1PRDDA |




Core Banking

| Full Course Name | Course Code |
|--|-------------|
| Core Banking AA Account Product Building Implementation Part 1 | CB3PRARP1 |
| Core Banking AA Account Product Building Implementation Part 2 | CB3PRARP2 |
| Core Banking AA Implementation Part 1 | CB3PRAAF1 |
| Core Banking AA Implementation Part 2 | CB3PRAAF2 |
| Core Banking AA Lending Foundation Part 1 | CB1PRAAL |
| Core Banking AA Lending Foundation Part 2 | CB2PRAAL |
| Core Banking AA Relationship Pricing Implementation | CB3PRARR |
| Core Banking AA Safe Deposit Box Implementation | CB3PRTBX |
| Core Banking AA Technical Overview | CB3PRAIN |
| Core Banking AC Accounts Foundation | CB1PRTAC |
| Core Banking AC Accounts Implementation Part 1 | CB3PRTAC1 |
| Core Banking AC Accounts Implementation Part 2 | CB3PRTAC2 |
| Core Banking Business Events Management | CB3PRBEM |
| Core Banking Cash Pooling Implementation | CB3PRTPO |
| Core Banking Cheque and Draft Management Foundation | CB1PRTCI |
| Core Banking Cloud Data Migration | CB1CLCDM |

| Full Course Name | Course Code |
|--|-------------|
| Core Banking Cloud Deployment | CB3CLCDE |
| Core Banking Collateral Foundation Part 1 | CB1PRTCO |
| Core Banking Collateral Foundation Part 2 | CB2PRTCO1 |
| Core Banking Collateral Foundation Part 3 | CB2PRTCO2 |
| Core Banking Collateral Implementation | CB3PRTCO |
| Core Banking Collections Implementation | CB3PRTCL |
| Core Banking Confirmation Matching Implementation | CB3PRCNM |
| Core Banking Customer Foundation Part 1 | CB1PRCUS |
| Core Banking Customer Foundation Part 2 | CB2PRCUS |
| Core Banking Data Framework Relational Replication | CB3PRDRR |
| Core Banking Design Studio IRIS RIM Importer | CB3DSIRR |
| Core Banking Essentials Part 1 | CB1PRESL1 |
| Core Banking Essentials Part 2 | CB1PRESL2 |
| Core Banking Factoring and Forfaiting (Bills) Implementation | CB3PRTBL |
| Core Banking Financial Accounting and Reporting Foundation | CB1PRTFI |
| Core Banking Financial Accounting Implementation Part 1 | CB3PRTFI1 |

| Full Course Name | Course Code |
|---|-------------|
| Core Banking Financial Accounting Implementation Part 2 | CB3PRTFI2 |
| Core Banking Forward Rate Agreements Implementation (FRA) | CB3PRTFR |
| Core Banking Kubernetes on Google Cloud | CB3CLKGC |
| Core Banking Letters of Credit Implementation Part 1 | CB3PRTL1 |
| Core Banking Letters of Credit Implementation Part 2 | CB3PRTL2 |
| Core Banking Letters of Credit Implementation Part 3 | CB3PRTL3 |
| Core Banking Letters of Credit Implementation Part 4 | CB3PRTL4 |
| Core Banking Limits Foundation Part 1 | CB1PRTL1 |
| Core Banking Limits Foundation Part 2 | CB2PRTL1 |
| Core Banking Limits Foundation Part 3 | CB2PRTL2 |
| Core Banking Limits Implementation | CB3PRTL1 |
| Core Banking Loans and Deposits | CB3PRTL1 |
| Core Banking Microservices and Transact on AWS Cloud | CB3CLMTA |
| Core Banking Miscellaneous Deals Implementation Part 1 | CB3PRTMD1 |
| Core Banking Miscellaneous Deals Implementation Part 2 | CB3PRTMD2 |

| Full Course Name | Course Code |
|--|-------------|
| Core Banking Model Bank On Dockers | CB3CLMBD |
| Core Banking Money Market Part 1 | CB3PRTMM1 |
| Core Banking Money Market Part 2 | CB3PRTMM2 |
| Core Banking Nostro Reconciliation Implementation | CB3PRTNR |
| Core Banking Origination Architecture Basic Implementation | CB3PROAB |
| Core Banking Past Dues Implementation | CB3PRTPD |
| Core Banking Position Management Implementation Part 1 | CB3PRTPM1 |
| Core Banking Position Management Implementation Part 2 | CB3PRTPM2 |
| Core Banking Post Closing Implementation | CB3PRTPC |
| Core Banking Securities Administration and Trading | CB3PRSC1 |
| Core Banking Securities Foundation | CB1PRSEF |
| Core Banking Swaps Implementation Part 1 | CB3PRTSW1 |
| Core Banking Swaps Implementation Part 2 | CB3PRTSW2 |
| Core Banking Syndicated Loans Implementation | CB3PRTSL |
| Core Banking Temenos Cloud Induction | CB1CLTCI |
| Core Banking Treasury Front Office Implementation | CB3PRTFO |

|  Delta | | | |
|--|-------------|--|-------------|
| Full Course Name | Course Code | Full Course Name | Course Code |
| Delta Analytics | DE1PRANA | Delta Infinity UXF and TCD New Features | DE1PRIUT |
| Delta Financial Crime Mitigation | DE1PRFCM | Delta Payment | DE1PRPAY |
| Delta Fund Administration and Wealth Management New Features | DE1PRFAW | Delta Payment and Financial Crime New Features | DE1PRPFC |

| Full Course Name | Course Code |
|--|-------------|
| Delta SaaS XAI FRM Data and Analytics New Features | DE1PRSXF |
| Delta Transact - Core Banking | DE1PRTCB |
| Delta Transact Functional New Features | DE1PRTFU |

| Full Course Name | Course Code |
|---------------------------------------|-------------|
| Delta Transact Technical New Features | DE1PRTTE |
| Delta Wealth Management | DE1PRWMA |
| Delta Wealth Management New Features | DE1PRFAW |



Financial Crime

| Full Course Name | Course Code |
|--|-------------|
| Financial Crime Administration | FC3PRTEC3 |
| Financial Crime AML Transaction Monitoring (Profile) | FC1PRFCM4 |
| Financial Crime AML Transaction Profile and Payment Fraud Monitoring SAP | FC3PRTEC5 |
| Financial Crime Configuration Functional Implementation | FC3PRFCM3 |
| Financial Crime Customer Sanctions and Watch Lists (Screen) | FC1PRFCM3 |
| Financial Crime Financial Crime (FCM) Overview | FC1PRFCM1 |
| Financial Crime Financial Crime (FCM) Technical Foundation Advanced | FC3PRTEC |
| Financial Crime Functional Architecture | FC3PRTEC2 |
| Financial Crime Installation | FC3PRTEC1 |
| Financial Crime Knowledge Manager Functional Implementation | FC3PRFCM1 |

| Full Course Name | Course Code |
|---|-------------|
| Financial Crime KYC Customer Risk Assessment | FC3PRTEC8 |
| Financial Crime KYC Customer Risk Assessment (KC+) | FC1PRFCM6 |
| Financial Crime Payment Fraud Monitoring (SAP) | FC1PRFCM5 |
| Financial Crime SaaS 2.0 FCM on Azure | TR1CLFCO |
| Financial Crime Sanctions Filtering and Watch Lists Screen | FC3PRTEC4 |
| Financial Crime Security Functional Implementation | FC3PRFCM2 |
| Financial Crime Transact Integration | FC3PRTEC6 |
| Financial Crime Transact Integration with DW Export and Batch | FC3PRTEC7 |
| Financial Crime Transact Integration with Realtime and DES | FC3PRTEC6 |
| Financial Crime Transaction Sanctions Filtering (Screen) | FC1PRFCM2 |



Temenos Digital

| Full Course Name | Course Code |
|------------------------------------|-------------|
| Infinity App Factory | IN1PRAFA |
| Infinity Components Implementation | IN1PRICI |

| Full Course Name | Course Code |
|---|-------------|
| Infinity Corporate Origination Foundation | IN1PRCOF |
| Infinity Delta Training 9.0 | QU1PRD90 |

| Full Course Name | Course Code |
|--|-------------|
| Infinity Developer Bootcamp with Visualizer and Fabric 9.0 | QU1PRB90 |
| Infinity Developer Bootcamp with Visualizer and Fabric 9.0 Delta | IN3PRDBD |
| Infinity Digital Banking Apps Extensibility | IN1PRRBE |
| Infinity Digital Banking Apps Extensibility Advanced | IN3PRRBE |
| Infinity Digital Banking Apps Technical Foundation Part 1 | IN3PRRBF1 |
| Infinity Digital Banking Apps Technical Foundation Part 2 | IN3PRRBF2 |
| Infinity Engage | IN1PRENG |
| Infinity Essentials | IN1PRESS |
| Infinity Essentials - Technical Part 1 | IN3PRESS1 |
| Infinity Essentials - Technical Part 2 | IN3PRESS2 |
| Infinity Essentials - Technical Part 3 | IN3PRESS3 |
| Infinity Installation | IN1PRINS |
| Infinity Journey Analytics Foundation | JO1ANOVE |
| Infinity Journey Maestro for Form Builders Part 1 | JO2MAFOB1 |
| Infinity Journey Maestro for Form Builders Part 2 | JO2MAFOB2 |
| Infinity Journey Maestro Form Builders | JO2MAFOB |
| Infinity Journey Manager for Platform Developers | JO2JMDEV |
| Infinity Journey Manager for Platform Developers Part 1 | JO2JMDEV1 |
| Infinity Journey Manager Operation Cloud | JO2JMOPC |
| Infinity Journey Manager Operation On Premises | JO2JMOPS |
| Infinity Journey Manager Platform Overview | JO1MAOVE |
| Infinity Journey Platform Architecture | JO1PRARC |
| Infinity Microservices Implementation | IN3PRMSI |

| Full Course Name | Course Code |
|---|-------------|
| Infinity Origination Foundation | IN1PRFOU |
| Infinity Origination Technical Foundation | IN3PRFOU |
| Infinity Origination Technical Foundation Part 1 | IN3PRFOU1 |
| Infinity Origination Technical Foundation Part 2 | IN3PRFOU2 |
| Infinity Quantum Platform Implementation Part 1 | IN3QUQPI1 |
| Infinity Quantum Platform Implementation Part 2 | IN3QUQPI2 |
| Infinity Quantum Platform Implementation Part 3 | IN3QUQPI3 |
| Infinity Quantum Platform Implementation Part 4 | IN3QUQPI4 |
| Infinity Quantum Platform Overview | IN1QUPOV |
| Infinity Quantum Testing Framework Foundation | IN1QUTFF |
| Infinity Retail Banking Apps Foundation | IN1PRRBF |
| Infinity Retail Origination Foundation | IN1PRFOU |
| Infinity SaaS Microservices Implementation on Azure | IN1CLMIA |
| Infinity Salesforce Integration | IN1PRITE |
| Infinity Small and Medium Enterprise (SME) Banking Part 1 | IN1PRSME1 |
| Infinity Small and Medium Enterprise (SME) Banking Part 2 | IN1PRSME2 |
| Infinity Small and Medium Enterprise (SME) Origination Foundation | IN1PRSOFF |
| Infinity Spotlight | IN1PRSPT |
| Infinity Spotlight Implementation | IN3PRSPT |
| Infinity Upgrade | IN1PRUPG |
| Infinity UXP Advanced Essentials | IN3UXADE |
| Infinity UXP Application Installation | IN1UXINS |
| Infinity UXP Enterprise Platform | IN2UXENP |

| Full Course Name | Course Code |
|--|-------------|
| Infinity UXP Enterprise Team | IN2UXENT |
| Infinity UXP Foundation Devices | IN1UXFDV |
| Infinity UXP Foundation Essentials with Hybrid Apps | IN1UXFEH |
| Infinity UXP Foundation Live CMS | IN1UXFLC |
| Infinity UXP Foundation Tables and Charts | IN1UXFTC |
| Infinity UXP Foundation Temenos Theme | IN1UXFTT |
| Infinity Wealth App Foundation | IN1PRWAF |
| Temenos Digital Banking Apps Extensibility | TD1PRRBE |
| Temenos Digital Banking Apps Extensibility Advanced | TD3PRRBE |
| Temenos Digital Banking Apps Technical Foundation Part 1 | TD3PRRBF1 |
| Temenos Digital Banking Apps Technical Foundation Part 2 | TD3PRRBF2 |

| Full Course Name | Course Code |
|---|-------------|
| Temenos Digital Essentials - Technical Part 1 | TD3PRESS1 |
| Temenos Digital Essentials - Technical Part 2 | TD3PRESS2 |
| Temenos Digital Essentials - Technical Part 3 | TD3PRESS3 |
| Temenos Digital Journey Maestro for Form Builders | JO2MAFOB |
| Temenos Digital Journey Manager Platform Overview | JO1MAOVE |
| Temenos Digital Origination Extensibility | TD1PREXT |
| Temenos Digital Origination Technical Foundation | TD3PRFOU |
| Temenos Digital Retail Banking Apps Foundation | TD1PRRBF |
| Temenos Digital Retail Origination Foundation | TD1PRFOU |
| Temenos Digital Spotlight | TD1PRSPT |
| Temenos Digital User and Identity Management | TD3PRUIM |



Islamic Banking

| Full Course Name | Course Code |
|--|-------------|
| Islamic Banking Islamic Banking Concepts | IS1PRIBC |
| Islamic Banking Islamic Finance Bai Salam Implementation | IF3PRBSM |
| Islamic Banking Islamic Finance Commodity Murabaha Implementation | IF3PRCMR |
| Islamic Banking Islamic Finance Diminishing Musharaka Implementation | IF3PRDMS |
| Islamic Banking Islamic Finance Ijara Implementation | IF3PRIJA |

| Full Course Name | Course Code |
|--|-------------|
| Islamic Banking Islamic Finance Murabaha Implementation | IF3PRMRB |
| Islamic Banking Islamic Finance Qard Hasan Implementation | IF3PRQHS |
| Islamic Banking Islamic Finance Wakala Musawama Implementation | IF3PRWAK |
| Islamic Banking Islamic Finance Workflow | IF2PRIBW |
| Islamic Banking Profit Distribution System Implementation | ID3PRPDS |



Payment

| Full Course Name | Course Code | Full Course Name | Course Code |
|--|-------------|--|-------------|
| Payment Cheque Collection Implementation | CB3PRPCC | Payment Instant Payments Implementation Part 2 | CB3PRTIP2 |
| Payment Cheque Collection Implementation | TR3PRPCC | Payment Instant Payments Implementation Part 2 | TR3PRTIP2 |
| Payment Clearing Framework - Part 1 | TR3PRPCF1 | Payment International Cross Border Payments | TR1PRCBP |
| Payment Clearing Framework - Part 2 | TR3PRPCF2 | Payment Liquidity Management Implementation | TR3PRLMA |
| Payment Clearing Framework Foundation | TR1PRPCF | Payment Overview | TR1PROVV |
| Payment Clearing Implementation | CB3PRPCI | Payment Payment Hub Foundation Part 1 | CB1PRTPH |
| Payment Clearing Implementation | TR3PRPCI | Payment Payment Hub Foundation Part 1 | TR1PRTPH |
| Payment Direct Debits | TR1PRDDE | Payment Payment Hub Foundation Part 2 | CB2PRTPH |
| Payment Expected Receipts Implementation | TR3PRTER | Payment Payment Hub Foundation Part 2 | TR2PRTPH |
| Payment Extensibility Framework | TR3PREFR | Payment Payment Hub Implementation Part 1 | CB3PRTPH1 |
| Payment Framework Technical | TR3PRPCF | Payment Payment Hub Implementation Part 1 | TR3PRTPH1 |
| Payment Funds Transfer | TR1PRFTR | Payment Payment Hub Implementation Part 2 | CB3PRTPH2 |
| Payment Funds Transfer - Part 1 | TR1PRFTR | Payment Payment Hub Implementation Part 2 | TR3PRTPH2 |
| Payment Funds Transfer - Part 2 | TR2PRFTR | Payment Repair Designer Part 1 | CB1PRRED1 |
| Payment Initiation Foundation | CB1PRTPI | Payment Repair Designer Part 1 | TR1PRRED1 |
| Payment Initiation Foundation | TR1PRTPI | Payment Repair Designer Part 2 | CB1PRRED2 |
| Payment Initiation Implementation | CB3PRTPI | Payment Repair Designer Part 2 | TR1PRRED2 |
| Payment Initiation Implementation Part 1 | TR3PRTPI1 | Payment Request to Pay | TR1PR RTP |
| Payment Initiation Implementation Part 2 | TR3PRTPI2 | Payment SaaS TARGET Instant Payments Settlement (TIPS) Payment Service | TR3CLTIS |
| Payment Instant Payments Implementation Part 1 | CB3PRTIP1 | Payment Sanction Screening | TR1PRSSC |
| Payment Instant Payments Implementation Part 1 | TR3PRTIP1 | Payment Standalone Payment Hub - Part 1 | TR3PRTAL1 |

| Full Course Name | Course Code |
|---|-------------|
| Payment Standalone Payment Hub - Part 2 | TR3PRTAL2 |
| Payment SWIFT GPI | CB1PRSWI |
| Payment SWIFT GPI | TR1PRSWI |

| Full Course Name | Course Code |
|---|-------------|
| Payment TARGET Instant Payments Settlement (TIPS) Payment Service | TR3PRTIS |
| Payment TARGET2 MX Implementation | TR3PRTMX |



Regional Banking

| Full Course Name | Course Code |
|---|-------------|
| Regional Banking UKMB BBSI Reporting | MB1UKBRE |
| Regional Banking UKMB Financial Services Compensation Scheme (FSCS) | MB1UKFSC |
| Regional Banking UKMB FSCS Continuity of Access | MB1UKFCA |
| Regional Banking UKMB Return Direct Credit | MB1UKRDC |
| Regional Banking UKMB Static Data | MB1UKSTA |
| Regional Banking USMB ACH Framework (ACHFRM) Part 1 | MB1USAFR1 |
| Regional Banking USMB ACH Framework (ACHFRM) Part 2 | MB1USAFR2 |
| Regional Banking USMB ACH Framework (ACHFRM) Part 3 | MB1USAFR3 |
| Regional Banking USMB Core (USCORE) Part 1 | MB1USCOR1 |
| Regional Banking USMB Core (USCORE) Part 2 | MB1USCOR2 |
| Regional Banking USMB Core (USCORE) Part 3 | MB1USCOR3 |
| Regional Banking USMB Credit Bureau Reporting (FINEXT) | MB1USCBR |
| Regional Banking USMB Customer Holds & Notes & Messages (NACUST) | MB1USCHN |
| Regional Banking USMB Escrow (ESCROW) Part 1 | MB1USESC1 |
| Regional Banking USMB Escrow (ESCROW) Part 2 | MB1USESC2 |
| Regional Banking USMB Individual Retirement Accounts (USIRAC) | MB1USIRA |
| Regional Banking USMB Inward Check Clearing Check 21 Interface (USCK21) | MB1USICC |

| Full Course Name | Course Code |
|--|-------------|
| Regional Banking USMB Lending (USLEND) | MB1USLEN |
| Regional Banking USMB Lending Regulations (USLREG) | MB1USLRE |
| Regional Banking USMB LMS Collections (LMSCOL) | MB1USLMS |
| Regional Banking USMB NSF Decision and Queue Management (NSFDES) | MB1USNDQ |
| Regional Banking USMB Payveris Interface - Bill Pay and P2P (NAPVPT) | MB1USPPP |
| Regional Banking USMB Real Time Gross Settlement (USRTGS) | MB1USRGS |
| Regional Banking USMB Regulations (USREGS) Part 1 | MB1USREG1 |
| Regional Banking USMB Regulations (USREGS) Part 2 | MB1USREG2 |
| Regional Banking USMB Regulations (USREGS) Part 3 | MB1USREG3 |
| Regional Banking USMB Remote Deposit Capture Interface (USRDCI) | MB1USRDC |
| Regional Banking USMB Reserve Sweeps (USRSRS) | MB1USRSW |
| Regional Banking USMB Retail (USRETL) Part 1 | MB1USRET1 |
| Regional Banking USMB Retail (USRETL) Part 2 | MB1USRET2 |
| Regional Banking USMB Retail (USRETL) Part 3 | MB1USRET3 |
| Regional Banking USMB Role Based Home Pages (RBHP) Part 1 | MB1USRBH1 |
| Regional Banking USMB Role Based Home Pages (RBHP) Part 2 | MB1USRBH2 |
| Regional Banking USMB Role Based Home Pages (RBHP) Part 3 | MB1USRBH3 |



Risk and Compliance

| Full Course Name | Course Code | Full Course Name | Course Code |
|--|-------------|---|-------------|
| Risk and Compliance Common Reporting Standards Implementation | TR3PRCRS | Risk and Compliance Financial Risk Management Foundation | TR1PRFRM |
| Risk and Compliance Contagion Process Implementation | TR3PRTJX | Risk and Compliance Financial Risk Management Web application Navigation and Models Configuration | TR1PRWNM |
| Risk and Compliance Customer Data Protection Implementation | CB3PRCDP | Risk and Compliance IFRS (International Financial Reporting Standards) Implementation | CB3PRTIF |
| Risk and Compliance Customer Data Protection Implementation | TR3PRCDP | Risk and Compliance IFRS (International Financial Reporting Standards) Implementation | TR3PRTIF |
| Risk and Compliance FATCA Client Identification Implementation | CB3PRTFA | Risk and Compliance Market Risk | TR1PRMRI |
| Risk and Compliance FATCA Client Identification Implementation | TR3PRTFA | Risk and Compliance Obligor Objects Implementation | TR3PRTOX |
| Risk and Compliance FATCA Reporting Implementation | CB3PRTFE | Risk and Compliance PSD2 Payments Implementation | TR3PRTPX |
| Risk and Compliance FATCA Reporting Implementation | TR3PRTFE | Risk and Compliance Qualified Intermediary Implementation | TR3PRTQI |
| Risk and Compliance FATCA Withholding Implementation | CB3PRTFW | Risk and Compliance Recognition of Fees (FAS91) Implementation | TR3PRFAS |
| Risk and Compliance FATCA Withholding Implementation | TR3PRTFW | Risk and Compliance Technical Risk | TR1PRTRI |
| Risk and Compliance Financial Risk Management Advanced | TR3PRFRM | | |



Temenos

| Full Course Name | Course Code | Full Course Name | Course Code |
|--|-------------|--|-------------|
| Temenos All Products Glossary | TE1PRGLO | Temenos Enterprise Pricing Foundation | TE1PREPF |
| Temenos Banking Capabilities (TBC) Implementation on Azure | TR3PRTBC | Temenos Enterprise Pricing Implementation | TE3PREPF |
| Temenos Cloud Induction | TE1CLTCI | Temenos eXplainable Artificial Intelligence (XAI) Part 1 | TE1PRXAI |
| Temenos Composable Banking Essentials | TE1CLCBE | Temenos eXplainable Artificial Intelligence (XAI) Part 2 | TE2PRXAI |
| Temenos Data Engineering and Navigation - Administrator | TE1PRDEA | Temenos Explorer User Agent Framework | TE3PREXP |
| Temenos Data Engineering Standalone Installation | AN1PRSIN | Temenos Implementation Methodology - Infinity | TE1INTIM |

| Full Course Name | Course Code | Full Course Name | Course Code |
|--|-------------|--|-------------|
| Temenos Implementation Methodology - Transact | TE1TRTIM | Temenos Retail Enterprise Service - Mortgage | TE1CLREM |
| Temenos Implementation Methodology - Wealth | TE1WETIM | Temenos SaaS Backup and Restore Policy | TE1CLCBP |
| Temenos LEAP Methodology | TE1PRLPM | Temenos SaaS Incident Management | TE1CLCIM |
| Temenos Microservices Foundation | TE1PRMSF | Temenos SaaS Microservices Implementation on Azure | TE1CLMIA |
| Temenos Microservices Implementation | TE3PRMSI | Temenos SaaS Security Overview | TE1CLSEC |
| Temenos Products Induction | TE1PRPIN | Temenos SaaS TBS Buy Now Pay later (BNPL) Service Overview | TE1PRBNP |
| Temenos Project Delivery - Methodology | TE1TRMET | Temenos Technologies Induction | TE1PRTIN |
| Temenos Project Delivery - SaaS Governance - ORB | TE1TRSGO | Temenos Transact Data Hub Overview for SaaS | TE1PRDDA |
| Temenos Retail Deposits Services Overview | TE1CLTDO | Temenos Unified UX - Core Library Implementation | TE1UXCLI |
| Temenos Retail Enterprise Service - Accounts | TE1CLREA | Temenos Unified UX - Web Component Development | TE1UXWCD |
| Temenos Retail Enterprise Service - Deposits | TE1CLRED | Temenos Universal Performance Metrics | TE1PRUPM |
| Temenos Retail Enterprise Service - Lending | TE1CLREL | | |

| Full Course Name | Course Code | Full Course Name | Course Code |
|---|-------------|---|-------------|
| TLC Administrators and Designers | TL1PRULI | TLC Fund Administration and Wealth Management Delta Q4-2021 | DE1Q4AT6 |
| TLC Engine Functionality | TL1PRFUN | TLC Infinity Analytics Datalake UXP and XAI Delta Q2-2021 | DE1Q2AT4 |
| TLC Engine Process Led Workshop | TL1PRPLW | TLC Infinity UXP and TCD Delta Q1-2022 | DE1Q1AT4 |
| TLC Engine Simulation Screen Capture | TL1PRSSC | TLC Payment Financial Crime and SaaS Delta Q2-2021 | DE1Q2AT5 |
| TLC Engine User Licenses | TL1PRULI | TLC Payments and Financial Crime Delta Q3-2021 | DE1Q3AT7 |
| TLC Fund Administration and Wealth Management Delta Q2-2021 | DE1Q2AT6 | TLC SaaS XAI Data and Analytics and FRM Delta Q3-2021 | DE1Q3AT5 |
| TLC Fund Administration and Wealth Management Delta Q3-2021 | DE1Q3AT6 | TLC Transact Development And Operations Delta Q1-2022 | DE1Q1AT1 |

| Full Course Name | Course Code |
|---|-------------|
| TLC Transact Development And Operations Delta Q2-2021 | DE1Q2AT1 |
| TLC Transact Development And Operations Delta Q3-2021 | DE1Q3AT1 |
| TLC Transact Development And Operations Delta Q4-2021 | DE1Q4AT1 |

| Full Course Name | Course Code |
|---|-------------|
| TLC Transact Functional 1 Delta Q2-2021 | DE1Q2AT2 |
| TLC Transact Functional 1 Delta Q4-2021 | DE1Q4AT2 |
| TLC Transact Functional 2 Delta Q2-2021 | DE1Q2AT3 |
| TLC Transact Functional 2 Delta Q3-2021 | DE1Q3AT3 |



| Full Course Name | Course Code |
|---|-------------|
| Transact AA Account Product Building Implementation Part 1 | TR3PRARP1 |
| Transact AA Account Product Building Implementation Part 2 | TR3PRARP2 |
| Transact AA Agent Commission Implementation | CB3PRAAG |
| Transact AA Agent Commission Implementation | TR3PRAAG |
| Transact AA Common Building Blocks Implementation Part 1 | TR3PRABB1 |
| Transact AA Common Building Blocks Implementation Part 2 | TR3PRABB2 |
| Transact AA Deposits Foundation Part 1 | TR1PRAAD |
| Transact AA Deposits Foundation Part 2 | TR2PRAAD |
| Transact AA Deposits Product Building Implementation | TR3PRADP |
| Transact AA Deposits Product Building Implementation Part 1 | TR3PRADP1 |
| Transact AA Deposits Product Building Implementation Part 2 | TR3PRADP2 |
| Transact AA External Product Implementation | TR3PRTAX |
| Transact AA Implementation Part 1 | TR3PRAAF1 |
| Transact AA Implementation Part 2 | TR3PRAAF2 |
| Transact AA Lending Foundation Part 1 | TR1PRAAL |

| Full Course Name | Course Code |
|--|-------------|
| Transact AA Lending Foundation Part 2 | TR2PRAAL |
| Transact AA Lending Product Building Implementation | TR3PRALP1 |
| Transact AA Lending Product Building Implementation | TR3PRALP2 |
| Transact AA Lending Product Building Implementation Part 1 | TR3PRALP1 |
| Transact AA Lending Product Building Implementation Part 2 | TR3PRALP2 |
| Transact AA Overview | TR1PRAAO |
| Transact AA Retail Accounts Foundation Part 1 | TR1PRAAA |
| Transact AA Retail Accounts Foundation Part 2 | TR2PRAAA |
| Transact AA Rewards Implementation | TR3PRTRW |
| Transact AA Safe Deposit Box Implementation | TR3PRTBX |
| Transact AA Technical Customisation | TR3PRACU |
| Transact AA Technical Integration | TR3PRAIG |
| Transact AA Technical Overview | TR3PRAIN |
| Transact AA Technical Programming | TR3PRAPR |
| Transact AC Accounts Foundation | TR1PRTAC |

| Full Course Name | Course Code |
|---|-------------|
| Transact AC Accounts Implementation Part 1 | TR3PRTAC1 |
| Transact AC Accounts Implementation Part 2 | TR3PRTAC2 |
| Transact Administration Implementation | TR3PRTAD |
| Transact API Framework Foundation | TR3PRAFF |
| Transact API Framework Published API | TR3PRAFP |
| Transact API Framework Security | TR3PRAFS |
| Transact Architecture Overview | TR1PRARC |
| Transact Asset Finance Implementation | TR3PRAFI |
| Transact Balance Netting Implementation | TR3PRTBN |
| Transact Banking Foundation | TR1PRTBF |
| Transact Browser Navigation | CB1PRNAV |
| Transact Browser Navigation | TR1PRNAV |
| Transact Business Events Management | TR3PRBEM |
| Transact Cash Pooling Implementation | TR3PRTPO |
| Transact Cash Pooling Implementation Part 1 | TR3PRTPO1 |
| Transact Cash Pooling Implementation Part 2 | TR3PRTPO2 |
| Transact Cheque and Draft Management Foundation | TR1PRTCI |
| Transact Cheque and Draft Management Implementation | TR3PRTCI |
| Transact Close Of Business Management Foundation | TR1PRCOB |
| Transact Close Of Business Management Global Processing | TR3PRCOB2 |
| Transact Close Of Business Management Implementation Part 1 | TR3PRCOB1A |
| Transact Close Of Business Management Implementation Part 2 | TR3PRCOB1B |
| Transact Cloud Change and Release Management | TR1CLCRM |

| Full Course Name | Course Code |
|--|-------------|
| Transact Cloud Deployment | TR3CLCDE |
| Transact Collateral Foundation Part 1 | TR1PRTCO |
| Transact Collateral Foundation Part 2 | TR2PRTCO1 |
| Transact Collateral Foundation Part 3 | TR2PRTCO2 |
| Transact Collateral Implementation | TR3PRTCO |
| Transact Collections Implementation | TR3PRTCL |
| Transact Common Reporting Standards Implementation | TR3PRCRS |
| Transact Corporate Actions | CB2PRCOA |
| Transact Corporate Actions | TR2PRCOA |
| Transact Corporate Lending Implementation Part 1 | TR3PRACL1 |
| Transact Corporate Lending Implementation Part 2 | TR3PRACL2 |
| Transact Customer Foundation Part 1 | TR1PRCUS |
| Transact Customer Foundation Part 2 | TR2PRCUS |
| Transact Data Event Streaming (DES) | TR1PRDES |
| Transact Data Framework Relational Replication | TR3PRDRR |
| Transact Data Life Cycle Management | TR3PRDLM |
| Transact Delivery MX Translation Implementation | TR3PRDMX |
| Transact Delivery Part 1 | TR3PRDEL1 |
| Transact Delivery Part 2 | TR3PRDEL2 |
| Transact Deployment on AWS Cloud | TR3CLMTA |
| Transact Derivatives Administration | TR2PRDXA |
| Transact Derivatives Trading and Management | TR2PRDXT |
| Transact Design Studio Advanced Adaptation | TR2DSADA |

| Full Course Name | Course Code |
|---|-------------|
| Transact Design Studio Data Eson Designer | TR2DSEDES |
| Transact Design Studio DSF Rules Designer | CB3DSDRD |
| Transact Design Studio DSF Rules Designer | TR3DSDRD |
| Transact Design Studio Enquiry Designer | CB2DSENG |
| Transact Design Studio Enquiry Designer | TR2DSENG |
| Transact Design Studio for Core Change Management | TR3PRDST |
| Transact Design Studio Foundation | TR1DSFOU |
| Transact Design Studio Process Workflow Designer | TR2DSPWD |
| Transact Design Studio Screen Designer | CB2DSSCR |
| Transact Design Studio Screen Designer | TR2DSSCR |
| Transact DSF Packager Advanced | TR3DSPAC |
| Transact DSF Packager Foundation | TR1DSPAC |
| Transact Essentials Part 1 | TR1PRESL1 |
| Transact Essentials Part 2 | TR1PRESL2 |
| Transact Event Framework Designer | TR3DSIFK |
| Transact Event Framework Inflow Foundation | TR1PRIFI |
| Transact Event Framework Inflow Implementation | TR3PRIFI |
| Transact Event Framework Overview | TR1PRIFO |
| Transact Event Framework Runtime | TR3PRIFR |
| Transact Explorer Customisation | TR3PRECU |
| Transact Explorer Navigation | TR1PRENA |
| Transact Extensibility Essentials | TR1CLCEX |
| Transact Extensibility for Java | TR3PREFJ |

| Full Course Name | Course Code |
|---|-------------|
| Transact Extensibility in Java | TR3PREFJ |
| Transact External BPM | TR3PRBPM |
| Transact Factoring and Forfaiting (Bills) Implementation | TR3PRTBL |
| Transact Fiduciaries | TR3PRTFD |
| Transact Financial Accounting and Reporting Foundation | TR1PRTFI |
| Transact Financial Accounting Implementation Part 1 | TR3PRTFI1 |
| Transact Financial Accounting Implementation Part 2 | TR3PRTFI2 |
| Transact Financial Inclusion Foundation | CB3PRFIF |
| Transact Financial Inclusion Foundation | TR1PRFIF |
| Transact Financial Reporting Implementation | TR3PRTRE |
| Transact Fixed Asset Management Implementation | TR3PRFAM |
| Transact FO Asset Management | TR3PRTAM |
| Transact FO Customer Relationship Manager | TR3PRCRM |
| Transact FO Delivery | TR3PRDEL |
| Transact FO Document Management | TR3PRDMG |
| Transact Forex | TR3PRTFX |
| Transact Forex Foundation | TR1PRTFX |
| Transact Forex Implementation | TR3PRTFX |
| Transact Forward Rate Agreements Implementation (FRA) | TR3PRTFR |
| Transact Funds Authorisation Microservices Implementation | TR3PRFMS |
| Transact Generic Accounting Interface Implementation | TR3PRGAI |
| Transact IBS Technical Utilities | TR3TIBSU |
| Transact IIB Custom Adapter | TR3CBIIB |

| Full Course Name | Course Code |
|--|-------------|
| Transact Installation | TR1PRINS |
| Transact Integration Framework Inflow PW Implementation | TR3PRIPW |
| Transact Integration Framework Overview | TR1PRIFO |
| Transact Integration Framework Runtime | TR3PRIFR |
| Transact Interaction Data Services Part 1 | TR3PRDSD1 |
| Transact Interaction Data Services Part 2 | TR3PRDSD2 |
| Transact Interest Taxes and Charges Foundation | CB1PRIAC |
| Transact Interest Taxes and Charges Foundation | TR1PRIAC |
| Transact Interest Taxes and Charges Implementation | CB3PRIAC |
| Transact Interest Taxes and Charges Implementation | TR3PRIAC |
| Transact ISO20022 Account Statement (CAMT) Implementation | TR3PRIAS |
| Transact Kubernetes on Azure Cloud | TR3CLKAC |
| Transact Letters of Credit Implementation Part 1 | TR3PRTL1 |
| Transact Letters of Credit Implementation Part 2 | TR3PRTL2 |
| Transact Letters of Credit Implementation Part 3 | TR3PRTL3 |
| Transact Letters of Credit Implementation Part 4 | TR3PRTL4 |
| Transact LIBOR Transition to Risk Free Rates Implementation Part 1 | TR3PRLIB1 |
| Transact LIBOR Transition to Risk Free Rates Implementation Part 2 | TR3PRLIB2 |
| Transact Limits Foundation Part 1 | TR1PRTL1 |
| Transact Limits Foundation Part 2 | TR2PRTL1 |
| Transact Limits Foundation Part 3 | TR2PRTL2 |
| Transact Limits Implementation | TR3PRTL1 |
| Transact Loans and Deposits | TR3PRTL1 |

| Full Course Name | Course Code |
|---|-------------|
| Transact Local Clearing Implementation | TR3PRLOC |
| Transact Microservices Adapter Implementation | TR3PRMAD |
| Transact Microservices Advanced Concepts Implementation | TR3PRMSA |
| Transact Microservices Foundation | TR1PRMSF |
| Transact Microservices Integration | TR1PRMSI |
| Transact Miscellaneous Deals Implementation Part 1 | TR3PRTMD1 |
| Transact Miscellaneous Deals Implementation Part 2 | TR3PRTMD2 |
| Transact Model Bank On Dockers | TR3CLMBD |
| Transact Money Market Foundation | TR1PRTMM |
| Transact Money Market Implementation | TR3PRTMM |
| Transact Money Market Part 1 | TR3PRTMM1 |
| Transact Money Market Part 2 | TR3PRTMM2 |
| Transact Monitoring | TR1PRMON |
| Transact Mule Adapter | TR3CBMUL |
| Transact Multi-Company - Multi-Book Implementation | CB3PRTMC |
| Transact Multi-Company - Multi-Book Implementation | TR3PRTMC |
| Transact Multi-Currency Accounts Implementation | TR3PRMCA |
| Transact Multi-Tenancy | TR3PRMTE |
| Transact Nostro Reconciliation Implementation | TR3PRTNR |
| Transact Open Financial Service Advanced | TR3PROFS |
| Transact Open Financial Service Foundation | TR1PROFS |
| Transact Past Dues Implementation | TR3PRTPD |
| Transact Performance and Tuning | TR1PRPAT |

| Full Course Name | Course Code |
|---|-------------|
| Transact Position Management Implementation Part 1 | TR3PRTPM1 |
| Transact Position Management Implementation Part 2 | TR3PRTPM2 |
| Transact Post Closing Implementation | TR3PRTPC |
| Transact Process Workflow Advanced | TR3PRPWF |
| Transact Process Workflow Foundation | TR1PRPWF |
| Transact Programming Components | TR3PRGCO |
| Transact Programming Foundation | TR3PRGFO |
| Transact Programming Routines | TR3PRGRO |
| Transact Programming Templates | TR3PRGTE |
| Transact Provisioning Implementation | TR3PRTPV |
| Transact PSD2 Account Information Implementation | TR3PRTTZ |
| Transact PSD2 Payments Implementation | TR3PRTPX |
| Transact Repos | TR3PRTRP |
| Transact Retail Securitisation Implementation | TR3PRRSI |
| Transact Retail Sweeping Implementation | TR3PRTRS |
| Transact SaaS 2.0 Essentials | TR1CLOVE |
| Transact SaaS 2.0 Security | TR1CLSEC |
| Transact SaaS 2.1 Automated Test Framework Scripting | TR1CLATF |
| Transact SaaS 2.1 Extensibility Essentials | TR1CLCEX |
| Transact SaaS Automated Test Framework Scripting | TR1CLATF |
| Transact SaaS Composable Banking Essentials | TR1CLCBE |
| Transact SaaS Essentials | TR1CLOVE |
| Transact SaaS Temenos Continuous Deployment - Administrator | TR1CDADM |

| Full Course Name | Course Code |
|--|-------------|
| Transact SaaS Temenos Continuous Deployment - Developer | TR1CDDEV |
| Transact SaaS Temenos Continuous Deployment - Tester | TR1CDTES |
| Transact SEAT Foundation | TR1PRSEA |
| Transact Secondary Loan Trading Implementation | TR3PRSLT |
| Transact Securities Administration | CB2PRSEA |
| Transact Securities Administration and Trading | TR3PRSCT |
| Transact Securities Back Office Foundation | TR1PRSCO |
| Transact Securities Back Office Implementation | CB3PRSCO |
| Transact Securities Back Office Implementation | TR3PRSCO |
| Transact Securities Foundation | TR1PRSEF |
| Transact Securities Trading and Management | CB2PRSET |
| Transact Security Management System | TR3PRSMS |
| Transact Settlements on Derivatives | TR2PRSDX |
| Transact Settlements on Securities | TR2PRSSE |
| Transact Swaps Foundation | TR1PRTSW |
| Transact Swaps Implementation | TR3PRTSW |
| Transact Swaps Implementation Part 1 | TR3PRTSW1 |
| Transact Swaps Implementation Part 2 | TR3PRTSW2 |
| Transact Syndicated Loans Implementation | TR3PRTSL |
| Transact TAFC-TAFJ Migration | TR3PRMIG |
| Transact TAFJ Foundation | TR1PRAFJ |
| Transact TAFJ Implementation | TR3PRAFJ |
| Transact TBS Global Service Lending Fulfillment Service Overview | TR1CLLFS |

| Full Course Name | Course Code | Full Course Name | Course Code |
|---|-------------|--|-------------|
| Transact Technical Concepts | TR1PRTEC | Transact Temenos Packager Foundation | TR1DSPAC |
| Transact Technical Essentials | TR3PRTES | Transact Temenos Security Authorisation Foundation | TR3PRTSA |
| Transact Teller Foundation Part 1 | TR1PRTTT | Transact Temenos Transact Overview | TR1PROVE |
| Transact Teller Foundation Part 2 | TR2PRTTT | Transact Transaction Cyclor Implementation | TR3PRTRC |
| Transact Teller Implementation | TR3PRTTT | Transact Updates and Upgrade | TR3PRUPD |
| Transact Temenos Advanced Collection (TAC) | TR1PRACO | Transact User Journey Teller | TR1UJTJT |
| Transact Temenos Advanced Collection (TAC) Functional | TR1PRACF | Transact UXP Browser Technical Overview | TR3PRBOV |
| Transact Temenos eXplainable Artificial Intelligence (XAI) Part 1 | TR1PRXAI | Transact Web Services | TR3PRTWS |
| Transact Temenos eXplainable Artificial Intelligence (XAI) Part 2 | TR2PRXAI | Transact Workbench Advanced | TR3PRWAD |
| Transact Temenos Open Connectivity Framework Part 1 | TR3PRTOC1 | Transact Workbench Extensibility | TR1PRWEX |
| Transact Temenos Open Connectivity Framework Part 2 | TR3PRTOC2 | Transact Workbench Foundation | TR1PRTWF |
| Transact Temenos Packager Advanced | TR3DSPAC | Transact Workbench Installation | TR1PRWIN |



Wealth Management

| Full Course Name | Course Code | Full Course Name | Course Code |
|---|-------------|--|-------------|
| Wealth Management Central Securities Depositories Regulation Foundation | WS1PRCSD | Wealth Management CH PM Installation | CH1PMINS |
| Wealth Management CH CRM Client and Contact Management | CH1RMCCM | Wealth Management CH PM Order Initiation and Processing | CH1PMF2B |
| Wealth Management CH IB Retail Essentials for Administration | CH3IBREA | Wealth Management CH PM Orders and Transfers | CH2PMF2B |
| Wealth Management CH IB Retail Essentials for Business | CH1IBREB | Wealth Management CH Real Time Engagement (Digital Engagement) | CH1DECAM |
| Wealth Management CH PM Advisory | CH1PMADV | Wealth Management Datasource Advanced | DS3PRADV |
| Wealth Management CH PM Analysis | CH2PMB2F | Wealth Management Datasource Architecture | DS1PRARC |
| Wealth Management CH PM Foundation and Navigation | CH1PMB2F | Wealth Management Datasource Foundation | DS1PRFOU |

| Full Course Name | Course Code | Full Course Name | Course Code |
|---|-------------|--|-------------|
| Wealth Management Datasource Installation | DS1PRINS | Wealth Management FO PM Order Management Part 2 | FO2PMOMT2 |
| Wealth Management FO PM Advanced Constraint Management | FO2PMACM | Wealth Management FO PM Portfolio Strategies | FO2PMPFS |
| Wealth Management FO PM Advanced Performance Analysis - Attribution | FO2PMPAA | Wealth Management FO PM Questionnaire | FO2PMQUE |
| Wealth Management FO PM Advanced Performance Analysis - Standard | FO2PMPAS | Wealth Management FO PM Reporting Adaptation | FO2PMRAD |
| Wealth Management FO PM Architecture | FO1PMARC | Wealth Management FO PM Reporting Foundation | FO1PMRFO |
| Wealth Management FO PM Data Administration and Security Overview | FO2PMDAS | Wealth Management FO PM Scripts and Formats | FO2PMSCF |
| Wealth Management FO PM Design Studio Administration | FO3WDADM | Wealth Management FO PM Scripts and Formats Part 1 | FO2PMSCF1 |
| Wealth Management FO PM Design Studio Foundation | FO1WDFOU | Wealth Management FO PM Scripts and Formats Part 2 | FO2PMSCF2 |
| Wealth Management FO PM Design Studio Odata API | FO3WDODA | Wealth Management FO PM System Management | FO2PMSYM |
| Wealth Management FO PM Design Studio WUI Adaptation | FO2WDWAD | Wealth Management FO PM TSL Administration | FO2PMTSL |
| Wealth Management FO PM Design Studio WUI Processes | FO3WDWPR | Wealth Management FO Web Admin Console | FO1PMWAC |
| Wealth Management FO PM Installation (NuoDB) | FO1PMIND | Wealth Management Reporting Solution Foundation | FO1PRRFS |
| Wealth Management FO PM Installation (Oracle) | FO1PMIOR | Wealth Management Structured Products Implementation | WS3PRTSY |
| Wealth Management FO PM Installation (Sybase) | FO1PMISY | Wealth Management TTI Forex | WS2TTFOR |
| Wealth Management FO PM Instrument Templates Orders | FO2PMITO | Wealth Management WealthSuite Overview | FO1WSOVE |
| Wealth Management FO PM IPO Subscription | FO2PMIPO | Wealth Management WS TTI Architecture | WS1TTARC |
| Wealth Management FO PM Managed Accounts | FO1PMMAC | Wealth Management WS TTI Cash and Securities | WS1TTCSE |
| Wealth Management FO PM Monitoring and Performance | FO3PMMPE | Wealth Management WS TTI Client and Portfolio | WS1TTCPF |
| Wealth Management FO PM Multi Entity Implementation | FO2PMMUE | Wealth Management WS TTI Derivatives | WS2TTDER |
| Wealth Management FO PM Operations and Positions | FO2PMOPP | Wealth Management WS TTI Foundation | WS1TTFOU |
| Wealth Management FO PM Order Management | FO2PMOMT | Wealth Management WS TTI Functional Concepts | WS1TTFUC |
| Wealth Management FO PM Order Management Part 1 | FO2PMOMT1 | Wealth Management WS TTI Order Management | WS2TTOMT |

Annual Cost: \$2,420 USD

Induction

Courses Available: 10

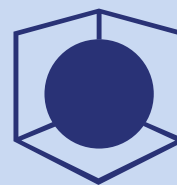


| Full Course Name | Course Code | Full Course Name | Course Code |
|---------------------------------|-------------|--|-------------|
| Temenos Cloud Induction | TE1CLTCI | Transact Customer Foundation Part 1 | TR1PRCUS |
| Temenos Products Induction | TE1PRPIN | Transact Explorer Navigation | TR1PRENA |
| Temenos Technologies Induction | TE1PRTIN | Transact Financial Accounting and Reporting Foundation | TR1PRTFI |
| Transact AC Accounts Foundation | TR1PRTAC | Transact Technical Essentials | TR3PRTES |
| Transact Architecture Overview | TR1PRARC | Transact Temenos Transact Overview | TR1PROVE |

Cost: Free

Transact Core Banking

Courses Available: 470



| Full Course Name | Course Code | Full Course Name | Course Code |
|---|-------------|--|-------------|
| Analytics Transact Data Hub Semantic Query Layer Foundation | AN1PRSEM | Core Banking Collateral Foundation Part 1 | CB1PRTCO |
| Analytics Transact Data Hub Semantic Query Layer Implementation | AN3PRSEM | Core Banking Collateral Foundation Part 2 | CB2PRTCO1 |
| Core Banking AA Account Product Building Implementation Part 1 | CB3PRARP1 | Core Banking Collateral Foundation Part 3 | CB2PRTCO2 |
| Core Banking AA Account Product Building Implementation Part 2 | CB3PRARP2 | Core Banking Collateral Implementation | CB3PRTCO |
| Core Banking AA Implementation Part 1 | CB3PRAAF1 | Core Banking Collections Implementation | CB3PRTCL |
| Core Banking AA Implementation Part 2 | CB3PRAAF2 | Core Banking Confirmation Matching Implementation | CB3PRCNM |
| Core Banking AA Lending Foundation Part 1 | CB1PRAAL | Core Banking Customer Foundation Part 1 | CB1PRCUS |
| Core Banking AA Lending Foundation Part 2 | CB2PRAAL | Core Banking Customer Foundation Part 2 | CB2PRCUS |
| Core Banking AA Relationship Pricing Implementation | CB3PRARR | Core Banking Data Framework Relational Replication | CB3PRDRR |
| Core Banking AA Safe Deposit Box Implementation | CB3PRTBX | Core Banking Design Studio IRIS RIM Importer | CB3DSIRR |
| Core Banking AA Technical Overview | CB3PRAIN | Core Banking Essentials Part 1 | CB1PRESL1 |
| Core Banking AC Accounts Foundation | CB1PRTAC | Core Banking Essentials Part 2 | CB1PRESL2 |
| Core Banking AC Accounts Implementation Part 1 | CB3PRTAC1 | Core Banking Factoring and Forfeiting (Bills) Implementation | CB3PRTBL |
| Core Banking AC Accounts Implementation Part 2 | CB3PRTAC2 | Core Banking Financial Accounting and Reporting Foundation | CB1PRTFI |
| Core Banking Business Events Management | CB3PRBEM | Core Banking Financial Accounting Implementation Part 1 | CB3PRTFI1 |
| Core Banking Cash Pooling Implementation | CB3PRTPO | Core Banking Financial Accounting Implementation Part 2 | CB3PRTFI2 |
| Core Banking Cheque and Draft Management Foundation | CB1PRTCI | Core Banking Forward Rate Agreements Implementation (FRA) | CB3PRTFR |
| Core Banking Cloud Data Migration | CB1CLCDM | Core Banking Kubernetes on Google Cloud | CB3CLKGC |
| Core Banking Cloud Deployment | CB3CLCDE | Core Banking Letters of Credit Implementation Part 1 | CB3PRTLC1 |

| Full Course Name | Course Code | Full Course Name | Course Code |
|--|-------------|---|-------------|
| Core Banking Letters of Credit Implementation Part 2 | CB3PRTLC2 | Core Banking Swaps Implementation Part 2 | CB3PRTSW2 |
| Core Banking Letters of Credit Implementation Part 3 | CB3PRTLC3 | Core Banking Syndicated Loans Implementation | CB3PRTSL |
| Core Banking Letters of Credit Implementation Part 4 | CB3PRTLC4 | Core Banking Temenos Cloud Induction | CB1CLTCI |
| Core Banking Limits Foundation Part 1 | CB1PRTL1 | Core Banking Treasury Front Office Implementation | CB3PRTFO |
| Core Banking Limits Foundation Part 2 | CB2PRTL1 | Delta Infinity UXP and TCD New Features | DE1PRIUT |
| Core Banking Limits Foundation Part 3 | CB2PRTL2 | Delta SaaS XAI FRM Data and Analytics New Features | DE1PR SXF |
| Core Banking Limits Implementation | CB3PRTL1 | Delta Transact - Core Banking | DE1PRTCB |
| Core Banking Loans and Deposits | CB3PRTL D | Delta Transact Functional New Features | DE1PRTFU |
| Core Banking Microservices and Transact on AWS Cloud | CB3CLMTA | Delta Transact Technical New Features | DE1PRTTE |
| Core Banking Miscellaneous Deals Implementation Part 1 | CB3PRTMD1 | Financial Crime SaaS 2.0 FCM on Azure | TR1CLFCO |
| Core Banking Miscellaneous Deals Implementation Part 2 | CB3PRTMD2 | Infinity SaaS Microservices Implementation on Azure | IN1CLMIA |
| Core Banking Model Bank On Dockers | CB3CLMBD | Infinity UXP Advanced Essentials | IN3UXADE |
| Core Banking Money Market Part 1 | CB3PRTMM1 | Infinity UXP Application Installation | IN1UXINS |
| Core Banking Money Market Part 2 | CB3PRTMM2 | Infinity UXP Enterprise Platform | IN2UXENP |
| Core Banking Nostro Reconciliation Implementation | CB3PRTNR | Infinity UXP Enterprise Team | IN2UXENT |
| Core Banking Origination Architecture Basic Implementation | CB3PROAB | Infinity UXP Foundation Devices | IN1UXFDV |
| Core Banking Past Dues Implementation | CB3PRTPD | Infinity UXP Foundation Essentials with Hybrid Apps | IN1UXFEH |
| Core Banking Position Management Implementation Part 1 | CB3PRTPM1 | Infinity UXP Foundation Live CMS | IN1UXFLC |
| Core Banking Position Management Implementation Part 2 | CB3PRTPM2 | Infinity UXP Foundation Tables and Charts | IN1UXFTC |
| Core Banking Post Closing Implementation | CB3PRTPC | Infinity UXP Foundation Temenos Theme | IN1UXFTT |
| Core Banking Securities Administration and Trading | CB3PR SCT | Islamic Banking Islamic Banking Concepts | IS1PRIBC |
| Core Banking Securities Foundation | CB1PRSEF | Islamic Banking Islamic Finance Bai Salam Implementation | IF3PRBSM |
| Core Banking Swaps Implementation Part 1 | CB3PRTSW1 | Islamic Banking Islamic Finance Commodity Murabaha Implementation | IF3PRCMR |

| Full Course Name | Course Code | Full Course Name | Course Code |
|--|-------------|--|-------------|
| Islamic Banking Islamic Finance Diminishing Musharaka Implementation | IF3PRDMS | Payment Initiation Implementation | CB3PRTPI |
| Islamic Banking Islamic Finance Ijara Implementation | IF3PRIJA | Payment Initiation Implementation Part 1 | TR3PRTPI1 |
| Islamic Banking Islamic Finance Murabaha Implementation | IF3PRMRB | Payment Initiation Implementation Part 2 | TR3PRTPI2 |
| Islamic Banking Islamic Finance Qard Hasan Implementation | IF3PRQHS | Payment Instant Payments Implementation Part 1 | CB3PRTIP1 |
| Islamic Banking Islamic Finance Wakala Musawama Implementation | IF3PRWAK | Payment Instant Payments Implementation Part 1 | TR3PRTIP1 |
| Islamic Banking Islamic Finance Workflow | IF2PRIBW | Payment Instant Payments Implementation Part 2 | CB3PRTIP2 |
| Islamic Banking Profit Distribution System Implementation | ID3PRPDS | Payment Instant Payments Implementation Part 2 | TR3PRTIP2 |
| Payment Cheque Collection Implementation | CB3PRPCC | Payment International Cross Border Payments | TR1PRCBP |
| Payment Cheque Collection Implementation | TR3PRPCC | Payment Liquidity Management Implementation | TR3PRLMA |
| Payment Clearing Framework - Part 1 | TR3PRPCF1 | Payment Overview | TR1PROVV |
| Payment Clearing Framework - Part 2 | TR3PRPCF2 | Payment Payment Hub Foundation Part 1 | CB1PRTPH |
| Payment Clearing Framework Foundation | TR1PRPCF | Payment Payment Hub Foundation Part 1 | TR1PRTPH |
| Payment Clearing Implementation | CB3PRPCI | Payment Payment Hub Foundation Part 2 | CB2PRTPH |
| Payment Clearing Implementation | TR3PRPCI | Payment Payment Hub Foundation Part 2 | TR2PRTPH |
| Payment Direct Debits | TR1PRDDE | Payment Payment Hub Implementation Part 1 | CB3PRTPH1 |
| Payment Expected Receipts Implementation | TR3PRTER | Payment Payment Hub Implementation Part 1 | TR3PRTPH1 |
| Payment Extensibility Framework | TR3PREFR | Payment Payment Hub Implementation Part 2 | CB3PRTPH2 |
| Payment Framework Technical | TR3PRPCF | Payment Payment Hub Implementation Part 2 | TR3PRTPH2 |
| Payment Funds Transfer | TR1PRFTR | Payment Repair Designer Part 1 | CB1PRRED1 |
| Payment Funds Transfer - Part 1 | TR1PRFTR | Payment Repair Designer Part 1 | TR1PRRED1 |
| Payment Funds Transfer - Part 2 | TR2PRFTR | Payment Repair Designer Part 2 | CB1PRRED2 |
| Payment Initiation Foundation | CB1PRTPI | Payment Repair Designer Part 2 | TR1PRRED2 |
| Payment Initiation Foundation | TR1PRTPI | Payment Request to Pay | TR1PRRTP |

| Full Course Name | Course Code | Full Course Name | Course Code |
|--|-------------|---|-------------|
| Payment SaaS TARGET Instant Payments Settlement (TIPS) Payment Service | TR3CLTIS | Regional Banking USMB Individual Retirement Accounts (USIRAC) | MB1USIRA |
| Payment Sanction Screening | TR1PRSSC | Regional Banking USMB Inward Check Clearing Check 21 Interface (USCK21) | MB1USICC |
| Payment Standalone Payment Hub - Part 1 | TR3PRTAL1 | Regional Banking USMB Lending (USLEND) | MB1USLEN |
| Payment Standalone Payment Hub - Part 2 | TR3PRTAL2 | Regional Banking USMB Lending Regulations (USLREG) | MB1USLRE |
| Payment SWIFT GPI | CB1PRSWI | Regional Banking USMB LMS Collections (LMSCOL) | MB1USLMS |
| Payment SWIFT GPI | TR1PRSWI | Regional Banking USMB NSF Decision and Queue Management (NSFDES) | MB1USNDQ |
| Payment TARGET Instant Payments Settlement (TIPS) Payment Service | TR3PRTIS | Regional Banking USMB Payveris Interface - Bill Pay and P2P (NAPVPT) | MB1USPPP |
| Payment TARGET2 MX Implementation | TR3PRTMX | Regional Banking USMB Real Time Gross Settlement (USRTGS) | MB1USRGS |
| Regional Banking UKMB BBSI Reporting | MB1UKBRE | Regional Banking USMB Regulations (USREGS) Part 1 | MB1USREG1 |
| Regional Banking UKMB Financial Services Compensation Scheme (FSCS) | MB1UKFSC | Regional Banking USMB Regulations (USREGS) Part 2 | MB1USREG2 |
| Regional Banking UKMB FSCS Continuity of Access | MB1UKFCA | Regional Banking USMB Regulations (USREGS) Part 3 | MB1USREG3 |
| Regional Banking UKMB Return Direct Credit | MB1UKRDC | Regional Banking USMB Remote Deposit Capture Interface (USRDCI) | MB1USRDC |
| Regional Banking UKMB Static Data | MB1UKSTA | Regional Banking USMB Reserve Sweeps (USRSRS) | MB1USRSW |
| Regional Banking USMB ACH Framework (ACHFRM) Part 1 | MB1USAFR1 | Regional Banking USMB Retail (USRETL) Part 1 | MB1USRET1 |
| Regional Banking USMB ACH Framework (ACHFRM) Part 2 | MB1USAFR2 | Regional Banking USMB Retail (USRETL) Part 2 | MB1USRET2 |
| Regional Banking USMB ACH Framework (ACHFRM) Part 3 | MB1USAFR3 | Regional Banking USMB Retail (USRETL) Part 3 | MB1USRET3 |
| Regional Banking USMB Core (USCORE) Part 1 | MB1USCOR1 | Regional Banking USMB Role Based Home Pages (RBHP) Part 1 | MB1USRBH1 |
| Regional Banking USMB Core (USCORE) Part 2 | MB1USCOR2 | Regional Banking USMB Role Based Home Pages (RBHP) Part 2 | MB1USRBH2 |
| Regional Banking USMB Core (USCORE) Part 3 | MB1USCOR3 | Regional Banking USMB Role Based Home Pages (RBHP) Part 3 | MB1USRBH3 |
| Regional Banking USMB Credit Bureau Reporting (FINEXT) | MB1USCBR | Risk and Compliance Common Reporting Standards Implementation | TR3PRCRS |
| Regional Banking USMB Customer Holds & Notes & Messages (NACUST) | MB1USCHN | Risk and Compliance Contagion Process Implementation | TR3PRTJX |
| Regional Banking USMB Escrow (ESCROW) Part 1 | MB1USESC1 | Risk and Compliance Customer Data Protection Implementation | CB3PRCDP |
| Regional Banking USMB Escrow (ESCROW) Part 2 | MB1USESC2 | Risk and Compliance Customer Data Protection Implementation | TR3PRCDP |

| Full Course Name | Course Code | Full Course Name | Course Code |
|---|-------------|--|-------------|
| Risk and Compliance FATCA Client Identification Implementation | CB3PRTFA | Temenos Enterprise Pricing Foundation | TE1PREPF |
| Risk and Compliance FATCA Client Identification Implementation | TR3PRTFA | Temenos Enterprise Pricing Implementation | TE3PREPF |
| Risk and Compliance FATCA Reporting Implementation | CB3PRTFE | Temenos eXplainable Artificial Intelligence (XAI) Part 1 | TE1PRXAI |
| Risk and Compliance FATCA Reporting Implementation | TR3PRTFE | Temenos eXplainable Artificial Intelligence (XAI) Part 2 | TE2PRXAI |
| Risk and Compliance FATCA Withholding Implementation | CB3PRTFW | Temenos Explorer User Agent Framework | TE3PREXP |
| Risk and Compliance FATCA Withholding Implementation | TR3PRTFW | Temenos Implementation Methodology - Transact | TE1TRTIM |
| Risk and Compliance Financial Risk Management Advanced | TR3PRFRM | Temenos LEAP Methodology | TE1PRLPM |
| Risk and Compliance Financial Risk Management Foundation | TR1PRFRM | Temenos Microservices Foundation | TE1PRMSF |
| Risk and Compliance Financial Risk Management Web application Navigation and Models Configuration | TR1PRWNM | Temenos Products Induction | TE1PRPIN |
| Risk and Compliance IFRS (International Financial Reporting Standards) Implementation | CB3PRTIF | Temenos Project Delivery - Methodology | TE1TRMET |
| Risk and Compliance IFRS (International Financial Reporting Standards) Implementation | TR3PRTIF | Temenos Project Delivery - SaaS Governance - ORB | TE1TRSGO |
| Risk and Compliance Market Risk | TR1PRMRI | Temenos Retail Deposits Services Overview | TE1CLTDO |
| Risk and Compliance Obligor Objects Implementation | TR3PRTOX | Temenos SaaS Backup and Restore Policy | TE1CLCBP |
| Risk and Compliance PSD2 Payments Implementation | TR3PRTPX | Temenos SaaS Incident Management | TE1CLCIM |
| Risk and Compliance Qualified Intermediary Implementation | TR3PRTQI | Temenos SaaS Microservices Implementation on Azure | TE1CLMIA |
| Risk and Compliance Recognition of Fees (FAS91) Implementation | TR3PRFAS | Temenos SaaS Security Overview | TE1CLSEC |
| Risk and Compliance Technical Risk | TR1PRTRI | Temenos SaaS TBS Buy Now Pay later (BNPL) Service Overview | TE1PRBNP |
| Temenos All Products Glossary | TE1PRGLO | Temenos Technologies Induction | TE1PRTIN |
| Temenos Banking Capabilities (TBC) Implementation on Azure | TR3PRTBC | Temenos Transact Data Hub Overview for SaaS | TE1PRDDA |
| Temenos Cloud Induction | TE1CLTCI | Temenos Unified UX - Core Library Implementation | TE1UXCLI |
| Temenos Composable Banking Essentials | TE1CLCBE | Temenos Unified UX - Web Component Development | TE1UXWCD |
| Temenos Data Engineering and Navigation - Administrator | TE1PRDEA | Temenos Universal Performance Metrics | TE1PRUPM |
| | | TLC Administrators and Designers | TL1PRULI |

| Full Course Name | Course Code | Full Course Name | Course Code |
|--|-------------|---|-------------|
| TLC Engine Functionality | TL1PRFUN | Transact AA Deposits Product Building Implementation | TR3PRADP |
| TLC Engine Process Led Workshop | TL1PRPLW | Transact AA Deposits Product Building Implementation Part 1 | TR3PRADP1 |
| TLC Engine Simulation Screen Capture | TL1PRSSC | Transact AA Deposits Product Building Implementation Part 2 | TR3PRADP2 |
| TLC Engine User Licenses | TL1PRULI | Transact AA External Product Implementation | TR3PRTAX |
| TLC Payment Financial Crime and SaaS Delta Q2-2021 | DE1Q2AT5 | Transact AA Implementation Part 1 | TR3PRAAF1 |
| TLC Payments and Financial Crime Delta Q3-2021 | DE1Q3AT7 | Transact AA Implementation Part 2 | TR3PRAAF2 |
| TLC SaaS XAI Data and Analytics and FRM Delta Q3-2021 | DE1Q3AT5 | Transact AA Lending Foundation Part 1 | TR1PRAAL |
| TLC Transact Development And Operations Delta Q1-2022 | DE1Q1AT1 | Transact AA Lending Foundation Part 2 | TR2PRAAL |
| TLC Transact Development And Operations Delta Q2-2021 | DE1Q2AT1 | Transact AA Lending Product Building Implementation | TR3PRALP1 |
| TLC Transact Development And Operations Delta Q3-2021 | DE1Q3AT1 | Transact AA Lending Product Building Implementation | TR3PRALP2 |
| TLC Transact Development And Operations Delta Q4-2021 | DE1Q4AT1 | Transact AA Lending Product Building Implementation Part 1 | TR3PRALP1 |
| TLC Transact Functional 1 Delta Q2-2021 | DE1Q2AT2 | Transact AA Lending Product Building Implementation Part 2 | TR3PRALP2 |
| TLC Transact Functional 1 Delta Q4-2021 | DE1Q4AT2 | Transact AA Overview | TR1PRAAO |
| TLC Transact Functional 2 Delta Q2-2021 | DE1Q2AT3 | Transact AA Retail Accounts Foundation Part 1 | TR1PRAAA |
| TLC Transact Functional 2 Delta Q3-2021 | DE1Q3AT3 | Transact AA Retail Accounts Foundation Part 2 | TR2PRAAA |
| Transact AA Account Product Building Implementation Part 1 | TR3PRARP1 | Transact AA Rewards Implementation | TR3PRTRW |
| Transact AA Account Product Building Implementation Part 2 | TR3PRARP2 | Transact AA Safe Deposit Box Implementation | TR3PRTBX |
| Transact AA Agent Commission Implementation | CB3PRAAG | Transact AA Technical Customisation | TR3PRACU |
| Transact AA Agent Commission Implementation | TR3PRAAG | Transact AA Technical Integration | TR3PRAIG |
| Transact AA Common Building Blocks Implementation Part 1 | TR3PRABB1 | Transact AA Technical Overview | TR3PRAIN |
| Transact AA Common Building Blocks Implementation Part 2 | TR3PRABB2 | Transact AA Technical Programming | TR3PRAPR |
| Transact AA Deposits Foundation Part 1 | TR1PRAAD | Transact AC Accounts Foundation | TR1PRTAC |
| Transact AA Deposits Foundation Part 2 | TR2PRAAD | Transact AC Accounts Implementation Part 1 | TR3PRTAC1 |

| Full Course Name | Course Code | Full Course Name | Course Code |
|---|-------------|--|-------------|
| Transact AC Accounts Implementation Part 2 | TR3PRTAC2 | Transact Collateral Foundation Part 1 | TR1PRTCO |
| Transact Administration Implementation | TR3PRTAD | Transact Collateral Foundation Part 2 | TR2PRTCO1 |
| Transact API Framework Foundation | TR3PRAFF | Transact Collateral Foundation Part 3 | TR2PRTCO2 |
| Transact API Framework Published API | TR3PRAFP | Transact Collateral Implementation | TR3PRTCO |
| Transact API Framework Security | TR3PRAFS | Transact Collections Implementation | TR3PRTCL |
| Transact Architecture Overview | TR1PRARC | Transact Common Reporting Standards Implementation | TR3PRCRS |
| Transact Asset Finance Implementation | TR3PRAFI | Transact Corporate Actions | CB2PRCOA |
| Transact Balance Netting Implementation | TR3PRTBN | Transact Corporate Actions | TR2PRCOA |
| Transact Banking Foundation | TR1PRTBF | Transact Corporate Lending Implementation Part 1 | TR3PRACL1 |
| Transact Browser Navigation | CB1PRNAV | Transact Corporate Lending Implementation Part 2 | TR3PRACL2 |
| Transact Browser Navigation | TR1PRNAV | Transact Customer Foundation Part 1 | TR1PRCUS |
| Transact Business Events Management | TR3PRBEM | Transact Customer Foundation Part 2 | TR2PRCUS |
| Transact Cash Pooling Implementation | TR3PRTPO | Transact Data Event Streaming (DES) | TR1PRDES |
| Transact Cash Pooling Implementation Part 1 | TR3PRTPO1 | Transact Data Framework Relational Replication | TR3PRDRR |
| Transact Cash Pooling Implementation Part 2 | TR3PRTPO2 | Transact Data Life Cycle Management | TR3PRDLM |
| Transact Cheque and Draft Management Foundation | TR1PRTCI | Transact Delivery MX Translation Implementation | TR3PRDMX |
| Transact Cheque and Draft Management Implementation | TR3PRTCI | Transact Delivery Part 1 | TR3PRDEL1 |
| Transact Close Of Business Management Foundation | TR1PRCOB | Transact Delivery Part 2 | TR3PRDEL2 |
| Transact Close Of Business Management Global Processing | TR3PRCOB2 | Transact Deployment on AWS Cloud | TR3CLMTA |
| Transact Close Of Business Management Implementation Part 1 | TR3PRCOB1A | Transact Derivatives Administration | TR2PRDXA |
| Transact Close Of Business Management Implementation Part 2 | TR3PRCOB1B | Transact Derivatives Trading and Management | TR2PRDXT |
| Transact Cloud Change and Release Management | TR1CLCRM | Transact Design Studio Advanced Adaptation | TR2DSADA |
| Transact Cloud Deployment | TR3CLCDE | Transact Design Studio Data Eson Designer | TR2DSDES |

| Full Course Name | Course Code | Full Course Name | Course Code |
|---|-------------|---|-------------|
| Transact Design Studio DSF Rules Designer | CB3DSDRD | Transact External BPM | TR3PRBPM |
| Transact Design Studio DSF Rules Designer | TR3DSDRD | Transact Factoring and Forfaiting (Bills) Implementation | TR3PRTBL |
| Transact Design Studio Enquiry Designer | CB2DSENG | Transact Fiduciaries | TR3PRTFD |
| Transact Design Studio Enquiry Designer | TR2DSENG | Transact Financial Accounting and Reporting Foundation | TR1PRTFI |
| Transact Design Studio for Core Change Management | TR3PRDST | Transact Financial Accounting Implementation Part 1 | TR3PRTFI1 |
| Transact Design Studio Foundation | TR1DSFOU | Transact Financial Accounting Implementation Part 2 | TR3PRTFI2 |
| Transact Design Studio Process Workflow Designer | TR2DSPWD | Transact Financial Inclusion Foundation | CB3PRFIF |
| Transact Design Studio Screen Designer | CB2DSSCR | Transact Financial Inclusion Foundation | TR1PRFIF |
| Transact Design Studio Screen Designer | TR2DSSCR | Transact Financial Reporting Implementation | TR3PRTRE |
| Transact DSF Packager Advanced | TR3DSPAC | Transact Fixed Asset Management Implementation | TR3PRFAM |
| Transact DSF Packager Foundation | TR1DSPAC | Transact FO Asset Management | TR3PRTAM |
| Transact Essentials Part 1 | TR1PRESL1 | Transact FO Customer Relationship Manager | TR3PRCRM |
| Transact Essentials Part 2 | TR1PRESL2 | Transact FO Delivery | TR3PRDEL |
| Transact Event Framework Designer | TR3DSIFK | Transact FO Document Management | TR3PRDMG |
| Transact Event Framework Inflow Foundation | TR1PRIFI | Transact Forex | TR3PRTFX |
| Transact Event Framework Inflow Implementation | TR3PRIFI | Transact Forex Foundation | TR1PRTFX |
| Transact Event Framework Overview | TR1PRIFO | Transact Forex Implementation | TR3PRTFX |
| Transact Event Framework Runtime | TR3PRIFR | Transact Forward Rate Agreements Implementation (FRA) | TR3PRTFR |
| Transact Explorer Customisation | TR3PRECU | Transact Funds Authorisation Microservices Implementation | TR3PRFMS |
| Transact Explorer Navigation | TR1PRENA | Transact Generic Accounting Interface Implementation | TR3PRGAI |
| Transact Extensibility Essentials | TR1CLCEX | Transact IBS Technical Utilities | TR3TIBSU |
| Transact Extensibility for Java | TR3PREFJ | Transact IIB Custom Adapter | TR3CBIIB |
| Transact Extensibility in Java | TR3PREFJ | Transact Installation | TR1PRINS |

| Full Course Name | Course Code | Full Course Name | Course Code |
|--|-------------|---|-------------|
| Transact Integration Framework Inflow PW Implementation | TR3PRIPW | Transact Local Clearing Implementation | TR3PRLOC |
| Transact Integration Framework Overview | TR1PRIFO | Transact Microservices Adapter Implementation | TR3PRMAD |
| Transact Integration Framework Runtime | TR3PRIFR | Transact Microservices Advanced Concepts Implementation | TR3PRMSA |
| Transact Interaction Data Services Part 1 | TR3PRDSD1 | Transact Microservices Foundation | TR1PRMSF |
| Transact Interaction Data Services Part 2 | TR3PRDSD2 | Transact Microservices Integration | TR1PRMSI |
| Transact Interest Taxes and Charges Foundation | CB1PRIAC | Transact Miscellaneous Deals Implementation Part 1 | TR3PRTMD1 |
| Transact Interest Taxes and Charges Foundation | TR1PRIAC | Transact Miscellaneous Deals Implementation Part 2 | TR3PRTMD2 |
| Transact Interest Taxes and Charges Implementation | CB3PRIAC | Transact Model Bank On Dockers | TR3CLMBD |
| Transact Interest Taxes and Charges Implementation | TR3PRIAC | Transact Money Market Foundation | TR1PRTMM |
| Transact ISO20022 Account Statement (CAMT) Implementation | TR3PRIAS | Transact Money Market Implementation | TR3PRTMM |
| Transact Kubernetes on Azure Cloud | TR3CLKAC | Transact Money Market Part 1 | TR3PRTMM1 |
| Transact Letters of Credit Implementation Part 1 | TR3PRTL1 | Transact Money Market Part 2 | TR3PRTMM2 |
| Transact Letters of Credit Implementation Part 2 | TR3PRTL2 | Transact Monitoring | TR1PRMON |
| Transact Letters of Credit Implementation Part 3 | TR3PRTL3 | Transact Mule Adapter | TR3CBMUL |
| Transact Letters of Credit Implementation Part 4 | TR3PRTL4 | Transact Multi-Company - Multi-Book Implementation | CB3PRTMC |
| Transact LIBOR Transition to Risk Free Rates Implementation Part 1 | TR3PRLIB1 | Transact Multi-Company - Multi-Book Implementation | TR3PRTMC |
| Transact LIBOR Transition to Risk Free Rates Implementation Part 2 | TR3PRLIB2 | Transact Multi-Currency Accounts Implementation | TR3PRMCA |
| Transact Limits Foundation Part 1 | TR1PRTL1 | Transact Multi-Tenancy | TR3PRMTE |
| Transact Limits Foundation Part 2 | TR2PRTL1 | Transact Nostro Reconciliation Implementation | TR3PRTNR |
| Transact Limits Foundation Part 3 | TR2PRTL2 | Transact Open Financial Service Advanced | TR3PROFS |
| Transact Limits Implementation | TR3PRTL1 | Transact Open Financial Service Foundation | TR1PROFS |
| Transact Loans and Deposits | TR3PRTL1 | Transact Past Dues Implementation | TR3PRTPD |
| | | Transact Position Management Implementation Part 1 | TR3PRTPM1 |

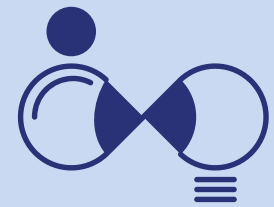
| Full Course Name | Course Code | Full Course Name | Course Code |
|--|-------------|--|-------------|
| Transact Position Management Implementation Part 2 | TR3PRTPM2 | Transact Securities Administration | CB2PRSEA |
| Transact Post Closing Implementation | TR3PRTPC | Transact Securities Administration and Trading | TR3PRSCT |
| Transact Process Workflow Advanced | TR3PRPWF | Transact Securities Back Office Foundation | TR1PRSCO |
| Transact Process Workflow Foundation | TR1PRPWF | Transact Securities Back Office Implementation | CB3PRSCO |
| Transact Programming Components | TR3PRGCO | Transact Securities Back Office Implementation | TR3PRSCO |
| Transact Programming Foundation | TR3PRGFO | Transact Securities Foundation | TR1PRSEF |
| Transact Programming Routines | TR3PRGRO | Transact Securities Trading and Management | CB2PRSET |
| Transact Programming Templates | TR3PRGTE | Transact Security Management System | TR3PRSMS |
| Transact Provisioning Implementation | TR3PRTPV | Transact Settlements on Derivatives | TR2PRSDX |
| Transact PSD2 Account Information Implementation | TR3PRTTZ | Transact Settlements on Securities | TR2PRSESE |
| Transact PSD2 Payments Implementation | TR3PRTPX | Transact Swaps Foundation | TR1PRTSW |
| Transact Repos | TR3PRTRP | Transact Swaps Implementation | TR3PRTSW |
| Transact Retail Securitisation Implementation | TR3PRRSI | Transact Swaps Implementation Part 1 | TR3PRTSW1 |
| Transact Retail Sweeping Implementation | TR3PRTRS | Transact Swaps Implementation Part 2 | TR3PRTSW2 |
| Transact SaaS 2.0 Essentials | TR1CLOVE | Transact Syndicated Loans Implementation | TR3PRTSL |
| Transact SaaS 2.0 Security | TR1CLSEC | Transact TAFC-TAFJ Migration | TR3PRMIG |
| Transact SaaS 2.1 Automated Test Framework Scripting | TR1CLATF | Transact TAFJ Foundation | TR1PRAFJ |
| Transact SaaS 2.1 Extensibility Essentials | TR1CLCEX | Transact TAFJ Implementation | TR3PRAFJ |
| Transact SaaS Automated Test Framework Scripting | TR1CLATF | Transact TBS Global Service Lending Fulfillment Service Overview | TR1CLLFS |
| Transact SaaS Composable Banking Essentials | TR1CLCBE | Transact Technical Concepts | TR1PRTEC |
| Transact SaaS Essentials | TR1CLOVE | Transact Technical Essentials | TR3PRTES |
| Transact SEAT Foundation | TR1PRSEA | Transact Teller Foundation Part 1 | TR1PRTTT |
| Transact Secondary Loan Trading Implementation | TR3PRSLT | Transact Teller Foundation Part 2 | TR2PRTTT |

| Full Course Name | Course Code | Full Course Name | Course Code |
|---|-------------|--|-------------|
| Transact Teller Implementation | TR3PRTTT | Transact Temenos Transact Overview | TR1PROVE |
| Transact Temenos Advanced Collection (TAC) | TR1PRACO | Transact Transaction Cyclor Implementation | TR3PRTRC |
| Transact Temenos Advanced Collection (TAC) Functional | TR1PRACF | Transact Updates and Upgrade | TR3PRUPD |
| Transact Temenos eXplainable Artificial Intelligence (XAI) Part 1 | TR1PRXAI | Transact User Journey Teller | TR1UJTTT |
| Transact Temenos eXplainable Artificial Intelligence (XAI) Part 2 | TR2PRXAI | Transact Web Services | TR3PRTWS |
| Transact Temenos Open Connectivity Framework Part 1 | TR3PRTOC1 | Transact Workbench Advanced | TR3PRWAD |
| Transact Temenos Open Connectivity Framework Part 2 | TR3PRTOC2 | Transact Workbench Extensibility | TR1PRWEX |
| Transact Temenos Packager Advanced | TR3DSPAC | Transact Workbench Foundation | TR1PRTWF |
| Transact Temenos Packager Foundation | TR1DSPAC | Transact Workbench Installation | TR1PRWIN |
| Transact Temenos Security Authorisation Foundation | TR3PRTSA | Wealth Management Structured Products Implementation | WS3PRTSY |

Annual Cost: \$1,705 USD

Temenos Digital

Courses Available: 96



| Full Course Name | Course Code | Full Course Name | Course Code |
|--|-------------|---|-------------|
| Delta Infinity UXP and TCD New Features | DE1PRIUT | Infinity Journey Maestro for Form Builders Part 1 | JO2MAFOB1 |
| Delta SaaS XAI FRM Data and Analytics New Features | DE1PRSXF | Infinity Journey Maestro for Form Builders Part 2 | JO2MAFOB2 |
| Infinity App Factory | IN1PRAFA | Infinity Journey Maestro Form Builders | JO2MAFOB |
| Infinity Components Implementation | IN1PRICI | Infinity Journey Manager for Platform Developers | JO2JMDEV |
| Infinity Corporate Origination Foundation | IN1PRCOF | Infinity Journey Manager for Platform Developers Part 1 | JO2JMDEV1 |
| Infinity Delta Training 9.0 | QU1PRD90 | Infinity Journey Manager Operation Cloud | JO2JMOPC |
| Infinity Developer Bootcamp with Visualizer and Fabric 9.0 | QU1PRB90 | Infinity Journey Manager Operation On Premises | JO2JMOPS |
| Infinity Developer Bootcamp with Visualizer and Fabric 9.0 Delta | IN3PRDBD | Infinity Journey Manager Platform Overview | JO1MAOVE |
| Infinity Digital Banking Apps Extensibility | IN1PRRBE | Infinity Journey Platform Architecture | JO1PRARC |
| Infinity Digital Banking Apps Extensibility Advanced | IN3PRRBE | Infinity Microservices Implementation | IN3PRMSI |
| Infinity Digital Banking Apps Technical Foundation Part 1 | IN3PRRBF1 | Infinity Origination Foundation | IN1PRFOU |
| Infinity Digital Banking Apps Technical Foundation Part 2 | IN3PRRBF2 | Infinity Origination Technical Foundation | IN3PRFOU |
| Infinity Engage | IN1PRENG | Infinity Origination Technical Foundation Part 1 | IN3PRFOU1 |
| Infinity Essentials | IN1PRESS | Infinity Origination Technical Foundation Part 2 | IN3PRFOU2 |
| Infinity Essentials - Technical Part 1 | IN3PRESS1 | Infinity Quantum Platform Implementation Part 1 | IN3QUQPI1 |
| Infinity Essentials - Technical Part 2 | IN3PRESS2 | Infinity Quantum Platform Implementation Part 2 | IN3QUQPI2 |
| Infinity Essentials - Technical Part 3 | IN3PRESS3 | Infinity Quantum Platform Implementation Part 3 | IN3QUQPI3 |
| Infinity Installation | IN1PRINS | Infinity Quantum Platform Implementation Part 4 | IN3QUQPI4 |
| Infinity Journey Analytics Foundation | JO1ANOVE | Infinity Quantum Platform Overview | IN1QUPOV |

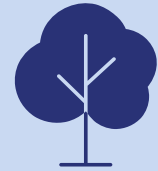
| Full Course Name | Course Code | Full Course Name | Course Code |
|---|-------------|--|-------------|
| Infinity Quantum Testing Framework Foundation | IN1QUTFF | Temenos Implementation Methodology - Infinity | TE1INTIM |
| Infinity Retail Banking Apps Foundation | IN1PRRBF | Temenos Implementation Methodology - Transact | TE1TRTIM |
| Infinity Retail Origination Foundation | IN1PRFOU | Temenos Microservices Foundation | TE1PRMSF |
| Infinity SaaS Microservices Implementation on Azure | IN1CLMIA | Temenos Microservices Implementation | TE3PRMSI |
| Infinity Salesforce Integration | IN1PRITE | Temenos Products Induction | TE1PRPIN |
| Infinity Small and Medium Enterprise (SME) Banking Part 1 | IN1PRSME1 | Temenos Project Delivery - Methodology | TE1TRMET |
| Infinity Small and Medium Enterprise (SME) Banking Part 2 | IN1PRSME2 | Temenos Project Delivery - SaaS Governance - ORB | TE1TRSGO |
| Infinity Small and Medium Enterprise (SME) Origination Foundation | IN1PRSOOF | Temenos SaaS Microservices Implementation on Azure | TE1CLMIA |
| Infinity Spotlight | IN1PRSPT | Temenos Technologies Induction | TE1PRTIN |
| Infinity Spotlight Implementation | IN3PRSPT | Temenos Unified UX - Core Library Implementation | TE1UXCLI |
| Infinity Upgrade | IN1PRUPG | Temenos Unified UX - Web Component Development | TE1UXWCD |
| Infinity UXP Advanced Essentials | IN3UXADE | Temenos Digital Banking Apps Extensibility | TD1PRRBE |
| Infinity UXP Application Installation | IN1UXINS | Temenos Digital Banking Apps Extensibility Advanced | TD3PRRBE |
| Infinity UXP Enterprise Platform | IN2UXENP | Temenos Digital Banking Apps Technical Foundation Part 1 | TD3PRRBF1 |
| Infinity UXP Enterprise Team | IN2UXENT | Temenos Digital Banking Apps Technical Foundation Part 2 | TD3PRRBF2 |
| Infinity UXP Foundation Devices | IN1UXFDV | Temenos Digital Essentials - Technical Part 1 | TD3PRESS1 |
| Infinity UXP Foundation Essentials with Hybrid Apps | IN1UXFEH | Temenos Digital Essentials - Technical Part 2 | TD3PRESS2 |
| Infinity UXP Foundation Live CMS | IN1UXFLC | Temenos Digital Essentials - Technical Part 3 | TD3PRESS3 |
| Infinity UXP Foundation Tables and Charts | IN1UXFTC | Temenos Digital Journey Maestro for Form Builders | JO2MAFOB |
| Infinity UXP Foundation Temenos Theme | IN1UXFTT | Temenos Digital Journey Manager Platform Overview | JO1MAOVE |
| Infinity Wealth App Foundation | IN1PRWAF | Temenos Digital Origination Extensibility | TD1PREXT |
| Temenos All Products Glossary | TE1PRGLO | Temenos Digital Origination Technical Foundation | TD3PRFOU |
| Temenos Data Engineering and Navigation - Administrator | TE1PRDEA | Temenos Digital Retail Banking Apps Foundation | TD1PRRBF |

| Full Course Name | Course Code | Full Course Name | Course Code |
|---|-------------|---|-------------|
| Temenos Digital Retail Origination Foundation | TD1PRFOU | TLC Engine Simulation Screen Capture | TL1PRSSC |
| Temenos Digital Spotlight | TD1PRSPT | TLC Engine User Licenses | TL1PRULI |
| Temenos Digital User and Identity Management | TD3PRUIM | TLC Infinity Analytics Datalake UXP and XAI Delta Q2-2021 | DE1Q2AT4 |
| TLC Administrators and Designers | TL1PRULI | TLC Infinity UXP and TCD Delta Q1-2022 | DE1Q1AT4 |
| TLC Engine Functionality | TL1PRFUN | Transact Temenos Transact Overview | TR1PROVE |
| TLC Engine Process Led Workshop | TL1PRPLW | Transact UXP Browser Technical Overview | TR3PRBOV |

Annual Cost: \$1,705 USD

Wealth Management

Courses Available: 162



| Full Course Name | Course Code | Full Course Name | Course Code |
|--|-------------|--|-------------|
| Core Banking AC Accounts Foundation | CB1PRTAC | Delta Fund Administration and Wealth Management New Features | DE1PRFAW |
| Core Banking AC Accounts Implementation Part 1 | CB3PRTAC1 | Delta SaaS XAI FRM Data and Analytics New Features | DE1PRSXF |
| Core Banking AC Accounts Implementation Part 2 | CB3PRTAC2 | Delta Wealth Management | DE1PRWMA |
| Core Banking Collateral Foundation Part 1 | CB1PRTCO | Delta Wealth Management New Features | DE1PRFAW |
| Core Banking Collateral Foundation Part 2 | CB2PRTCO1 | Infinity Wealth App Foundation | IN1PRWAF |
| Core Banking Collateral Foundation Part 3 | CB2PRTCO2 | Temenos All Products Glossary | TE1PRGLO |
| Core Banking Collateral Implementation | CB3PRTCO | Temenos Data Engineering and Navigation - Administrator | TE1PRDEA |
| Core Banking Customer Foundation Part 1 | CB1PRCUS | Temenos Implementation Methodology - Transact | TE1TRTIM |
| Core Banking Customer Foundation Part 2 | CB2PRCUS | Temenos Implementation Methodology - Wealth | TE1WETIM |
| Core Banking Design Studio IRIS RIM Importer | CB3DSIRR | Temenos Products Induction | TE1PRPIN |
| Core Banking Financial Accounting and Reporting Foundation | CB1PRTFI | Temenos Project Delivery - Methodology | TE1TRMET |
| Core Banking Financial Accounting Implementation Part 1 | CB3PRTFI1 | Temenos Project Delivery - SaaS Governance - ORB | TE1TRSGO |
| Core Banking Financial Accounting Implementation Part 2 | CB3PRTFI2 | Temenos Technologies Induction | TE1PRTIN |
| Core Banking Limits Foundation Part 1 | CB1PRTL1 | Temenos Unified UX - Core Library Implementation | TE1UXCLI |
| Core Banking Limits Foundation Part 2 | CB2PRTL1 | Temenos Unified UX - Web Component Development | TE1UXWCD |
| Core Banking Limits Foundation Part 3 | CB2PRTL2 | TLC Administrators and Designers | TL1PRULI |
| Core Banking Limits Implementation | CB3PRTL1 | TLC Engine Functionality | TL1PRFUN |
| Core Banking Securities Administration and Trading | CB3PRSCT | TLC Engine Process Led Workshop | TL1PRPLW |
| Core Banking Securities Foundation | CB1PRSEF | TLC Engine Simulation Screen Capture | TL1PRSSC |

| Full Course Name | Course Code | Full Course Name | Course Code |
|---|-------------|--|-------------|
| TLC Engine User Licenses | TL1PRULI | Transact Delivery Part 2 | TR3PRDEL2 |
| TLC Fund Administration and Wealth Management Delta Q2-2021 | DE1Q2AT6 | Transact Derivatives Trading and Management | TR2PRDXT |
| TLC Fund Administration and Wealth Management Delta Q3-2021 | DE1Q3AT6 | Transact Design Studio Advanced Adaptation | TR2DSADA |
| TLC Fund Administration and Wealth Management Delta Q4-2021 | DE1Q4AT6 | Transact Design Studio Data Eson Designer | TR2DSDES |
| Transact AA Retail Accounts Foundation Part 1 | TR1PRAAA | Transact Design Studio DSF Rules Designer | CB3DSDRD |
| Transact AA Retail Accounts Foundation Part 2 | TR2PRAAA | Transact Design Studio DSF Rules Designer | TR3DSDRD |
| Transact AC Accounts Foundation | TR1PRTAC | Transact Design Studio Enquiry Designer | CB2DSENG |
| Transact AC Accounts Implementation Part 1 | TR3PRTAC1 | Transact Design Studio Enquiry Designer | TR2DSENG |
| Transact AC Accounts Implementation Part 2 | TR3PRTAC2 | Transact Design Studio for Core Change Management | TR3PRDST |
| Transact API Framework Foundation | TR3PRAFF | Transact Design Studio Foundation | TR1DSFOU |
| Transact API Framework Published API | TR3PRAFP | Transact Design Studio Screen Designer | CB2DSSCR |
| Transact API Framework Security | TR3PRAFS | Transact Design Studio Screen Designer | TR2DSSCR |
| Transact Browser Navigation | CB1PRNAV | Transact DSF Packager Advanced | TR3DSPAC |
| Transact Browser Navigation | TR1PRNAV | Transact DSF Packager Foundation | TR1DSPAC |
| Transact Collateral Foundation Part 1 | TR1PRTCO | Transact Event Framework Designer | TR3DSIFK |
| Transact Collateral Foundation Part 2 | TR2PRTCO1 | Transact Financial Accounting and Reporting Foundation | TR1PRTFI |
| Transact Collateral Foundation Part 3 | TR2PRTCO2 | Transact Financial Accounting Implementation Part 1 | TR3PRTFI1 |
| Transact Collateral Implementation | TR3PRTCO | Transact Financial Accounting Implementation Part 2 | TR3PRTFI2 |
| Transact Corporate Actions | CB2PRCOA | Transact FO Asset Management | TR3PRTAM |
| Transact Corporate Actions | TR2PRCOA | Transact FO Customer Relationship Manager | TR3PRCRM |
| Transact Customer Foundation Part 1 | TR1PRCUS | Transact FO Delivery | TR3PRDEL |
| Transact Customer Foundation Part 2 | TR2PRCUS | Transact FO Document Management | TR3PRDMG |
| Transact Delivery Part 1 | TR3PRDEL1 | Transact Limits Foundation Part 1 | TR1PRTL1 |

| Full Course Name | Course Code | Full Course Name | Course Code |
|---|-------------|---|-------------|
| Transact Limits Foundation Part 2 | TR2PRTL1 | Wealth Management CH IB Retail Essentials for Business | CH1IBREB |
| Transact Limits Foundation Part 3 | TR2PRTL2 | Wealth Management CH PM Advisory | CH1PMADV |
| Transact Limits Implementation | TR3PRTL1 | Wealth Management CH PM Analysis | CH2PMB2F |
| Transact Repos | TR3PRTRP | Wealth Management CH PM Foundation and Navigation | CH1PMB2F |
| Transact SEAT Foundation | TR1PRSEA | Wealth Management CH PM Installation | CH1PMINS |
| Transact Securities Administration | CB2PRSEA | Wealth Management CH PM Order Initiation and Processing | CH1PMF2B |
| Transact Securities Administration and Trading | TR3PRSCT | Wealth Management CH PM Orders and Transfers | CH2PMF2B |
| Transact Securities Back Office Foundation | TR1PRSCO | Wealth Management CH Real Time Engagement (Digital Engagement) | CH1DECAM |
| Transact Securities Back Office Implementation | CB3PRSCO | Wealth Management Datasource Advanced | DS3PRADV |
| Transact Securities Back Office Implementation | TR3PRSCO | Wealth Management Datasource Architecture | DS1PRARC |
| Transact Securities Foundation | TR1PRSEF | Wealth Management Datasource Foundation | DS1PRFOU |
| Transact Securities Trading and Management | CB2PRSET | Wealth Management Datasource Installation | DS1PRINS |
| Transact Settlements on Derivatives | TR2PRSDX | Wealth Management FO PM Advanced Constraint Management | FO2PMACM |
| Transact Settlements on Securities | TR2PRSSE | Wealth Management FO PM Advanced Performance Analysis - Attribution | FO2PMPAA |
| Transact Temenos Packager Advanced | TR3DSPAC | Wealth Management FO PM Advanced Performance Analysis - Standard | FO2PMPAS |
| Transact Temenos Packager Foundation | TR1DSPAC | Wealth Management FO PM Architecture | FO1PMARC |
| Transact Temenos Transact Overview | TR1PROVE | Wealth Management FO PM Data Administration and Security Overview | FO2PMDAS |
| Transact Workbench Advanced | TR3PRWAD | Wealth Management FO PM Design Studio Administration | FO3WDADM |
| Transact Workbench Foundation | TR1PRTWF | Wealth Management FO PM Design Studio Foundation | FO1WDFOU |
| Transact Workbench Installation | TR1PRWIN | Wealth Management FO PM Design Studio Odata API | FO3WDODA |
| Wealth Management Central Securities Depositories Regulation Foundation | WS1PRCSD | Wealth Management FO PM Design Studio WUI Adaptation | FO2WDWAD |
| Wealth Management CH CRM Client and Contact Management | CH1RMCCM | Wealth Management FO PM Design Studio WUI Processes | FO3WDWPR |
| Wealth Management CH IB Retail Essentials for Administration | CH3IBREA | Wealth Management FO PM Installation (NuoDB) | FO1PMIND |

| Full Course Name | Course Code | Full Course Name | Course Code |
|---|-------------|--|-------------|
| Wealth Management FO PM Installation (Oracle) | FO1PMIOR | Wealth Management FO PM Scripts and Formats Part 1 | FO2PMSCF1 |
| Wealth Management FO PM Installation (Sybase) | FO1PMISY | Wealth Management FO PM Scripts and Formats Part 2 | FO2PMSCF2 |
| Wealth Management FO PM Instrument Templates Orders | FO2PMITO | Wealth Management FO PM System Management | FO2PMSYM |
| Wealth Management FO PM IPO Subscription | FO2PMIPO | Wealth Management FO PM TSL Administration | FO2PMTSL |
| Wealth Management FO PM Managed Accounts | FO1PMMAC | Wealth Management FO Web Admin Console | FO1PMWAC |
| Wealth Management FO PM Monitoring and Performance | FO3PMMPE | Wealth Management Reporting Solution Foundation | FO1PRRFS |
| Wealth Management FO PM Multi Entity Implementation | FO2PMMUE | Wealth Management Structured Products Implementation | WS3PRTSY |
| Wealth Management FO PM Operations and Positions | FO2PMOPP | Wealth Management TTI Forex | WS2TTFOR |
| Wealth Management FO PM Order Management | FO2PMOMT | Wealth Management WealthSuite Overview | FO1WSOVE |
| Wealth Management FO PM Order Management Part 1 | FO2PMOMT1 | Wealth Management WS TTI Architecture | WS1TTARC |
| Wealth Management FO PM Order Management Part 2 | FO2PMOMT2 | Wealth Management WS TTI Cash and Securities | WS1TTCSE |
| Wealth Management FO PM Portfolio Strategies | FO2PMPFS | Wealth Management WS TTI Client and Portfolio | WS1TTCPF |
| Wealth Management FO PM Questionnaire | FO2PMQUE | Wealth Management WS TTI Derivatives | WS2TTDER |
| Wealth Management FO PM Reporting Adaptation | FO2PMRAD | Wealth Management WS TTI Foundation | WS1TTFOU |
| Wealth Management FO PM Reporting Foundation | FO1PMRFO | Wealth Management WS TTI Functional Concepts | WS1TTFUC |
| Wealth Management FO PM Scripts and Formats | FO2PMSCF | Wealth Management WS TTI Order Management | WS2TTOMT |

Annual Cost: \$1,705 USD

Payments

Courses Available: 79



| Full Course Name | Course Code | Full Course Name | Course Code |
|---|-------------|--|-------------|
| Core Banking Cheque and Draft Management Foundation | CB1PRTCI | Payment Initiation Foundation | TR1PRTPI |
| Delta Payment | DE1PRPAY | Payment Initiation Implementation | CB3PRTPI |
| Delta Payment and Financial Crime New Features | DE1PRPFC | Payment Initiation Implementation Part 1 | TR3PRTPI1 |
| Delta SaaS XAI FRM Data and Analytics New Features | DE1PRSXF | Payment Initiation Implementation Part 2 | TR3PRTPI2 |
| Payment Cheque Collection Implementation | CB3PRPCC | Payment Instant Payments Implementation Part 1 | CB3PRTIP1 |
| Payment Cheque Collection Implementation | TR3PRPCC | Payment Instant Payments Implementation Part 1 | TR3PRTIP1 |
| Payment Clearing Framework - Part 1 | TR3PRPCF1 | Payment Instant Payments Implementation Part 2 | CB3PRTIP2 |
| Payment Clearing Framework - Part 2 | TR3PRPCF2 | Payment Instant Payments Implementation Part 2 | TR3PRTIP2 |
| Payment Clearing Framework Foundation | TR1PRPCF | Payment International Cross Border Payments | TR1PRCBP |
| Payment Clearing Implementation | CB3PRPCI | Payment Liquidity Management Implementation | TR3PRLMA |
| Payment Clearing Implementation | TR3PRPCI | Payment Overview | TR1PROVV |
| Payment Direct Debits | TR1PRDDE | Payment Payment Hub Foundation Part 1 | CB1PRTPH |
| Payment Expected Receipts Implementation | TR3PRTER | Payment Payment Hub Foundation Part 1 | TR1PRTPH |
| Payment Extensibility Framework | TR3PREFR | Payment Payment Hub Foundation Part 2 | CB2PRTPH |
| Payment Framework Technical | TR3PRPCF | Payment Payment Hub Foundation Part 2 | TR2PRTPH |
| Payment Funds Transfer | TR1PRFTR | Payment Payment Hub Implementation Part 1 | CB3PRTPH1 |
| Payment Funds Transfer - Part 1 | TR1PRFTR | Payment Payment Hub Implementation Part 1 | TR3PRTPH1 |
| Payment Funds Transfer - Part 2 | TR2PRFTR | Payment Payment Hub Implementation Part 2 | CB3PRTPH2 |
| Payment Initiation Foundation | CB1PRTPI | Payment Payment Hub Implementation Part 2 | TR3PRTPH2 |

| Full Course Name | Course Code | Full Course Name | Course Code |
|--|-------------|--|-------------|
| Payment Repair Designer Part 1 | CB1PRRED1 | Temenos Technologies Induction | TE1PRTIN |
| Payment Repair Designer Part 1 | TR1PRRED1 | Temenos Unified UX - Core Library Implementation | TE1UXCLI |
| Payment Repair Designer Part 2 | CB1PRRED2 | Temenos Unified UX - Web Component Development | TE1UXWCD |
| Payment Repair Designer Part 2 | TR1PRRED2 | TLC Administrators and Designers | TL1PRULI |
| Payment Request to Pay | TR1PRRTP | TLC Engine Functionality | TL1PRFUN |
| Payment SaaS TARGET Instant Payments Settlement (TIPS) Payment Service | TR3CLTIS | TLC Engine Process Led Workshop | TL1PRPLW |
| Payment Sanction Screening | TR1PRSSC | TLC Engine Simulation Screen Capture | TL1PRSSC |
| Payment Standalone Payment Hub - Part 1 | TR3PRTAL1 | TLC Engine User Licenses | TL1PRULI |
| Payment Standalone Payment Hub - Part 2 | TR3PRTAL2 | TLC Payment Financial Crime and SaaS Delta Q2-2021 | DE1Q2AT5 |
| Payment SWIFT GPI | CB1PRSWI | TLC Payments and Financial Crime Delta Q3-2021 | DE1Q3AT7 |
| Payment SWIFT GPI | TR1PRSWI | TLC SaaS XAI Data and Analytics and FRM Delta Q3-2021 | DE1Q3AT5 |
| Payment TARGET Instant Payments Settlement (TIPS) Payment Service | TR3PRTIS | Transact Cheque and Draft Management Foundation | TR1PRTCI |
| Payment TARGET2 MX Implementation | TR3PRTMX | Transact Cheque and Draft Management Implementation | TR3PRTCI |
| Risk and Compliance PSD2 Payments Implementation | TR3PRTPX | Transact ISO20022 Account Statement (CMT) Implementation | TR3PRIAS |
| Temenos All Products Glossary | TE1PRGLO | Transact Local Clearing Implementation | TR3PRLOC |
| Temenos Data Engineering and Navigation - Administrator | TE1PRDEA | Transact PSD2 Account Information Implementation | TR3PRTTZ |
| Temenos Implementation Methodology - Transact | TE1TRTIM | Transact PSD2 Payments Implementation | TR3PRTPX |
| Temenos Products Induction | TE1PRPIN | Transact Teller Foundation Part 1 | TR1PRTTT |
| Temenos Project Delivery - Methodology | TE1TRMET | Transact Teller Foundation Part 2 | TR2PRTTT |
| Temenos Project Delivery - SaaS Governance - ORB | TE1TRSGO | Transact Teller Implementation | TR3PRTTT |
| Temenos SaaS TBS Buy Now Pay later (BNPL) Service Overview | TE1PRBNP | | |

Annual Cost: \$990 USD

Analytics

Courses Available: 50



| Full Course Name | Course Code | Full Course Name | Course Code |
|---|-------------|---|-------------|
| Analytics Application Groups Data Relationship and Datasets | AN1PRGDD | Analytics Temenos Data Engineering Architecture in Transact Data Hub | AN1PRTTA |
| Analytics Application KPI Information Tiles and Dashboard | AN1PRKPD | Analytics Temenos Data Engineering Architecture in Transact Data Hub, Temenos Data Lake and Analytics | AN1PRTTA |
| Analytics Application Navigation | AN1PRAAN | Analytics Transact Data Hub Data Lake Dataflow and Configuration | AN1PRDDD |
| Analytics Application Pivot Reports | AN1PRAPR | Analytics Transact Data Hub Data Reconciliation | AN1PRDRE |
| Analytics Data Engineering and Navigation - Designer | AN1PRDED | Analytics Transact Data Hub Essentials | AN1PRDHE |
| Analytics Extract Data Store (EDS) Foundation | AN1PREDS | Analytics Transact Data Hub Installation on Azure | AN1PRIOA |
| Analytics Introduction to Data Event Streaming (DES) | AN1PRDAT | Analytics Transact Data Hub Installation on Premises | AN1PRIOP |
| Analytics Metadata Management System | AN1PRMMS | Analytics Transact Data Hub Overview | AN1PRDDA |
| Analytics Overview | AN1PROVE | Analytics Transact Data Hub Semantic Query Layer Foundation | AN1PRSEM |
| Analytics Product Implementation - Technical | AN3PRPOV | Analytics Transact Data Hub Semantic Query Layer Implementation | AN3PRSEM |
| Analytics Product Introduction - Business | AN1PRPOV | Analytics Transact Data Hub Semantic Query Layer Installation | AN3PRDHS |
| Analytics Product Introduction - Technical | AN3PRPOV | Analytics Transact Data Hub Temenos Data Lake and Temenos Analytics Overview | AN1PRDDA |
| Analytics Quick Reports | AN1PRQCR | Delta Analytics | DE1PRANA |
| Analytics Temenos Analytics Architecture Dataflow and Configuration | AN1PRAAD | Delta SaaS XAI FRM Data and Analytics New Features | DE1PRSXF |
| Analytics Temenos Data Engineering and Navigation - Administrator | AN1PRDEA | Temenos All Products Glossary | TE1PRGLO |
| Analytics Temenos Data Engineering and Navigation - Designer | AN1PRDED | Temenos Data Engineering and Navigation - Administrator | TE1PRDEA |
| Analytics Temenos Data Engineering and Navigation - Designer Part 1 | AN1PRDED1 | Temenos Data Engineering Standalone Installation | AN1PRSIN |
| Analytics Temenos Data Engineering and Navigation - Designer Part 2 | AN1PRDED2 | Temenos Implementation Methodology - Transact | TE1TRTIM |
| Analytics Temenos Data Engineering and Navigation - Scheduler | AN1PRDES | | |

| Full Course Name | Course Code | Full Course Name | Course Code |
|--|-------------|--|-------------|
| Temenos Products Induction | TE1PRPIN | Temenos Unified UX - Web Component Development | TE1UXWCD |
| Temenos Project Delivery - Methodology | TE1TRMET | TLC Administrators and Designers | TL1PRULI |
| Temenos Project Delivery - SaaS Governance - ORB | TE1TRSGO | TLC Engine Functionality | TL1PRFUN |
| Temenos Technologies Induction | TE1PRTIN | TLC Engine Process Led Workshop | TL1PRPLW |
| Temenos Transact Data Hub Overview for SaaS | TE1PRDDA | TLC Engine Simulation Screen Capture | TL1PRSSC |
| Temenos Unified UX - Core Library Implementation | TE1UXCLI | TLC Engine User Licenses | TL1PRULI |
| | | TLC Infinity UXP and TCD Delta Q1-2022 | DE1Q1AT4 |

Annual Cost: \$990 USD

Financial Crime Mitigation

Courses Available: 39



| Full Course Name | Course Code | Full Course Name | Course Code |
|--|-------------|---|-------------|
| Delta Financial Crime Mitigation | DE1PRFCM | Financial Crime Transact Integration with DW Export and Batch | FC3PRTEC7 |
| Delta Payment and Financial Crime New Features | DE1PRPFC | Financial Crime Transact Integration with Realtime and DES | FC3PRTEC6 |
| Delta SaaS XAI FRM Data and Analytics New Features | DE1PRSXF | Financial Crime Transaction Sanctions Filtering (Screen) | FC1PRFCM2 |
| Financial Crime Administration | FC3PRTEC3 | Temenos All Products Glossary | TE1PRGLO |
| Financial Crime AML Transaction Monitoring (Profile) | FC1PRFCM4 | Temenos Data Engineering and Navigation - Administrator | TE1PRDEA |
| Financial Crime AML Transaction Profile and Payment Fraud Monitoring SAP | FC3PRTEC5 | Temenos Implementation Methodology - Transact | TE1TRTIM |
| Financial Crime Configuration Functional Implementation | FC3PRFCM3 | Temenos Products Induction | TE1PRPIN |
| Financial Crime Customer Sanctions and Watch Lists (Screen) | FC1PRFCM3 | Temenos Project Delivery - Methodology | TE1TRMET |
| Financial Crime Financial Crime (FCM) Overview | FC1PRFCM1 | Temenos Project Delivery - SaaS Governance - ORB | TE1TRSGO |
| Financial Crime Financial Crime (FCM) Technical Foundation Advanced | FC3PRTEC | Temenos Technologies Induction | TE1PRTIN |
| Financial Crime Functional Architecture | FC3PRTEC2 | Temenos Unified UX - Core Library Implementation | TE1UXCLI |
| Financial Crime Installation | FC3PRTEC1 | Temenos Unified UX - Web Component Development | TE1UXWCD |
| Financial Crime Knowledge Manager Functional Implementation | FC3PRFCM1 | TLC Administrators and Designers | TL1PRULI |
| Financial Crime KYC Customer Risk Assessment | FC3PRTEC8 | TLC Engine Functionality | TL1PRFUN |
| Financial Crime KYC Customer Risk Assessment (KC+) | FC1PRFCM6 | TLC Engine Process Led Workshop | TL1PRPLW |
| Financial Crime Payment Fraud Monitoring (SAP) | FC1PRFCM5 | TLC Engine Simulation Screen Capture | TL1PRSSC |
| Financial Crime Sanctions Filtering and Watch Lists Screen | FC3PRTEC4 | TLC Engine User Licenses | TL1PRULI |
| Financial Crime Security Functional Implementation | FC3PRFCM2 | TLC Payment Financial Crime and SaaS Delta Q2-2021 | DE1Q2AT5 |
| Financial Crime Transact Integration | FC3PRTEC6 | TLC Payments and Financial Crime Delta Q3-2021 | DE1Q3AT7 |

| Full Course Name | Course Code | Full Course Name | Course Code |
|---|-------------|------------------|-------------|
| TLC SaaS XAI Data and Analytics and FRM Delta Q3-2021 | DE1Q3AT5 | | |

Annual Cost: \$990 USD

Transact – Migration

Courses Available: 97



| Full Course Name | Course Code | Full Course Name | Course Code |
|---|-------------|---|-------------|
| Core Banking Business Events Management | CB3PRBEM | Transact AA Deposits Product Building Implementation Part 2 | TR3PRADP2 |
| Core Banking Data Framework Relational Replication | CB3PRDRR | Transact AA Implementation Part 1 | TR3PRAAF1 |
| Core Banking Design Studio IRIS RIM Importer | CB3DSIRR | Transact AA Implementation Part 2 | TR3PRAAF2 |
| Risk and Compliance IFRS (International Financial Reporting Standards) Implementation | TR3PRTIF | Transact AA Lending Foundation Part 1 | TR1PRAAL |
| Temenos All Products Glossary | TE1PRGLO | Transact AA Lending Foundation Part 2 | TR2PRAAL |
| Temenos eXplainable Artificial Intelligence (XAI) Part 1 | TE1PRXAI | Transact AA Lending Product Building Implementation | TR3PRALP1 |
| Temenos eXplainable Artificial Intelligence (XAI) Part 2 | TE2PRXAI | Transact AA Lending Product Building Implementation | TR3PRALP2 |
| Temenos Implementation Methodology - Transact | TE1TRTIM | Transact AA Lending Product Building Implementation Part 1 | TR3PRALP1 |
| Temenos Project Delivery - Methodology | TE1TRMET | Transact AA Lending Product Building Implementation Part 2 | TR3PRALP2 |
| Temenos Project Delivery - SaaS Governance - ORB | TE1TRSGO | Transact AA Technical Customisation | TR3PRACU |
| Temenos Unified UX – Core Library Implementation | TE1UXCLI | Transact AA Technical Integration | TR3PRAIG |
| Temenos Unified UX – Web Component Development | TE1UXWCD | Transact AA Technical Overview | TR3PRAIN |
| Transact AA Account Product Building Implementation Part 1 | TR3PRARP1 | Transact AA Technical Programming | TR3PRAPR |
| Transact AA Account Product Building Implementation Part 2 | TR3PRARP2 | Transact Administration Implementation | TR3PRTAD |
| Transact AA Common Building Blocks Implementation Part 1 | TR3PRABB1 | Transact API Framework Foundation | TR3PRAFF |
| Transact AA Common Building Blocks Implementation Part 2 | TR3PRABB2 | Transact API Framework Published API | TR3PRAFP |
| Transact AA Deposits Product Building Implementation | TR3PRADP | Transact API Framework Security | TR3PRAFS |
| Transact AA Deposits Product Building Implementation Part 1 | TR3PRADP1 | Transact Architecture Overview | TR1PRARC |
| | | Transact Browser Navigation | CB1PRNAV |

| Full Course Name | Course Code | Full Course Name | Course Code |
|---|-------------|---|-------------|
| Transact Browser Navigation | TR1PRNAV | Transact Event Framework Designer | TR3DSIFK |
| Transact Business Events Management | TR3PRBEM | Transact Event Framework Inflow Foundation | TR1PRIFI |
| Transact Close Of Business Management Foundation | TR1PRCOB | Transact Event Framework Inflow Implementation | TR3PRIFI |
| Transact Close Of Business Management Global Processing | TR3PRCOB2 | Transact Event Framework Overview | TR1PRIFO |
| Transact Close Of Business Management Implementation Part 1 | TR3PRCOB1A | Transact Event Framework Runtime | TR3PRIFR |
| Transact Close Of Business Management Implementation Part 2 | TR3PRCOB1B | Transact Explorer Navigation | TR1PRENA |
| Transact Customer Foundation Part 1 | TR1PRCUS | Transact Extensibility for Java | TR3PREFJ |
| Transact Customer Foundation Part 2 | TR2PRCUS | Transact Extensibility in Java | TR3PREFJ |
| Transact Data Framework Relational Replication | TR3PRDRR | Transact IIB Custom Adapter | TR3CBIIB |
| Transact Data Life Cycle Management | TR3PRDLM | Transact Installation | TR1PRINS |
| Transact Design Studio Advanced Adaptation | TR2DSADA | Transact Integration Framework Inflow PW Implementation | TR3PRIPW |
| Transact Design Studio Data Eson Designer | TR2DSEDES | Transact Integration Framework Overview | TR1PRIFO |
| Transact Design Studio DSF Rules Designer | CB3DSDRD | Transact Integration Framework Runtime | TR3PRIFR |
| Transact Design Studio DSF Rules Designer | TR3DSDRD | Transact Multi-Tenancy | TR3PRMTE |
| Transact Design Studio Enquiry Designer | CB2DSENG | Transact Open Financial Service Advanced | TR3PROFS |
| Transact Design Studio Enquiry Designer | TR2DSENG | Transact Open Financial Service Foundation | TR1PROFS |
| Transact Design Studio for Core Change Management | TR3PRDST | Transact Programming Components | TR3PRGCO |
| Transact Design Studio Foundation | TR1DSFOU | Transact Programming Foundation | TR3PRGFO |
| Transact Design Studio Process Workflow Designer | TR2DSPWD | Transact Programming Routines | TR3PRGRO |
| Transact Design Studio Screen Designer | CB2DSSCR | Transact Programming Templates | TR3PRGTE |
| Transact Design Studio Screen Designer | TR2DSSCR | Transact Security Management System | TR3PRSMS |
| Transact DSF Packager Advanced | TR3DSPAC | Transact TAFC-TAFJ Migration | TR3PRMIG |
| Transact DSF Packager Foundation | TR1DSPAC | Transact TAFJ Foundation | TR1PRAFJ |

| Full Course Name | Course Code | Full Course Name | Course Code |
|---|-------------|--|-------------|
| Transact TAFJ Implementation | TR3PRAFJ | Transact Temenos Packager Foundation | TR1DSPAC |
| Transact Technical Concepts | TR1PRTEC | Transact Updates and Upgrade | TR3PRUPD |
| Transact Technical Essentials | TR3PRTES | Transact Web Services | TR3PRTWS |
| Transact Temenos eXplainable Artificial Intelligence (XAI) Part 1 | TR1PRXAI | Transact Workbench Advanced | TR3PRWAD |
| Transact Temenos eXplainable Artificial Intelligence (XAI) Part 2 | TR2PRXAI | Transact Workbench Foundation | TR1PRTWF |
| Transact Temenos Open Connectivity Framework Part 1 | TR3PRTOC1 | Transact Workbench Installation | TR1PRWIN |
| Transact Temenos Packager Advanced | TR3DSPAC | Wealth Management FO PM Design Studio Administration | FO3WDADM |

Annual Cost: \$990 USD

Transact – Upgrade

Courses Available: 32



| Full Course Name | Course Code | Full Course Name | Course Code |
|---|-------------|--|-------------|
| Temenos All Products Glossary | TE1PRGLO | Transact Installation | TR1PRINS |
| Temenos Implementation Methodology - Transact | TE1TRTIM | Transact Open Financial Service Advanced | TR3PROFS |
| Temenos Project Delivery - Methodology | TE1TRMET | Transact Programming Components | TR3PRGCO |
| Temenos Project Delivery - SaaS Governance - ORB | TE1TRSGO | Transact Programming Foundation | TR3PRGFO |
| Temenos Unified UX - Core Library Implementation | TE1UXCLI | Transact Programming Routines | TR3PRGRO |
| Temenos Unified UX - Web Component Development | TE1UXWCD | Transact Programming Templates | TR3PRGTE |
| Transact Administration Implementation | TR3PRTAD | Transact Security Management System | TR3PRSMS |
| Transact Architecture Overview | TR1PRARC | Transact TAFC-TAFJ Migration | TR3PRMIG |
| Transact Browser Navigation | CB1PRNAV | Transact TAFJ Foundation | TR1PRAFJ |
| Transact Browser Navigation | TR1PRNAV | Transact TAFJ Implementation | TR3PRAFJ |
| Transact Close Of Business Management Foundation | TR1PRCOB | Transact Technical Concepts | TR1PRTEC |
| Transact Close Of Business Management Implementation Part 1 | TR3PRCOB1A | Transact Technical Essentials | TR3PRTES |
| Transact Close Of Business Management Implementation Part 2 | TR3PRCOB1B | Transact Updates and Upgrade | TR3PRUPD |
| Transact Explorer Navigation | TR1PRENA | Transact Workbench Advanced | TR3PRWAD |
| Transact Extensibility for Java | TR3PREFJ | Transact Workbench Foundation | TR1PRTWF |
| Transact Extensibility in Java | TR3PREFJ | Transact Workbench Foundation | TR1PRTWF |

Annual Cost: \$990 USD

Project Manager

Courses Available: 36



| Full Course Name | Course Code | Full Course Name | Course Code |
|--|-------------|--|-------------|
| Analytics Product Introduction - Business | AN1PRPOV | Temenos Project Delivery - SaaS Governance - ORB | TE1TRSGO |
| Core Banking AA Lending Foundation Part 1 | CB1PRAAL | Temenos SaaS Security Overview | TE1CLSEC |
| Core Banking AC Accounts Foundation | CB1PRTAC | Temenos Technologies Induction | TE1PRTIN |
| Core Banking Customer Foundation Part 1 | CB1PRCUS | Transact AA Deposits Foundation Part 1 | TR1PRAAD |
| Core Banking Financial Accounting and Reporting Foundation | CB1PRTFI | Transact AA Lending Foundation Part 1 | TR1PRAAL |
| Core Banking Limits Foundation Part 1 | CB1PRTL1 | Transact AA Overview | TR1PRAAO |
| Financial Crime Financial Crime (FCM) Overview | FC1PRFCM1 | Transact AA Retail Accounts Foundation Part 1 | TR1PRAAA |
| Infinity Essentials | IN1PRESS | Transact AC Accounts Foundation | TR1PRTAC |
| Payment Overview | TR1PROVV | Transact Browser Navigation | CB1PRNAV |
| Payment Payment Hub Foundation Part 1 | CB1PRTPH | Transact Browser Navigation | TR1PRNAV |
| Payment Payment Hub Foundation Part 1 | TR1PRTPH | Transact Customer Foundation Part 1 | TR1PRCUS |
| Temenos All Products Glossary | TE1PRGLO | Transact Customer Foundation Part 2 | TR2PRCUS |
| Temenos Cloud Induction | TE1CLTCI | Transact Explorer Navigation | TR1PRENA |
| Temenos Implementation Methodology - Infinity | TE1INTIM | Transact Financial Accounting and Reporting Foundation | TR1PRTFI |
| Temenos Implementation Methodology - Transact | TE1TRTIM | Transact Limits Foundation Part 1 | TR1PRTL1 |
| Temenos Implementation Methodology - Wealth | TE1WETIM | Transact SaaS Essentials | TR1CLOVE |
| Temenos Products Induction | TE1PRPIN | Transact Temenos Transact Overview | TR1PROVE |
| Temenos Project Delivery - Methodology | TE1TRMET | Wealth Management WealthSuite Overview | FO1WSOVE |
| | | | |

Annual Cost: \$990 USD



© 2025 Temenos Headquarters SA — All Rights Reserved.

Warning: This document is protected by copyright law and international treaties. Unauthorised reproduction of this document, or any portion of it, may result in severe and criminal penalties, and will be prosecuted to the maximum extent possible under law.

temenos